

HCP
PUMPS
America

2021

General Catalog

professionalism • innovation • service • commitment



2021

General Catalog

Pumps

| | | | |
|---------------------|-----------|----------------|-----------|
| GF Series | 01 | IC Series | 10 |
| AF Series | 02 | HDG Series | 11 |
| AFC Series | 03 | L Series | 12 |
| F Series | 04 | LA Series | 13 |
| FN Series | 05 | GDS/GDR Series | 14 |
| Suction Lift Series | 06 | A Series | 15 |
| DBP Series | 07 | AN Series | 16 |
| SA/SF Series | 08 | AL Series | 17 |
| HD/BD Series | 09 | | |

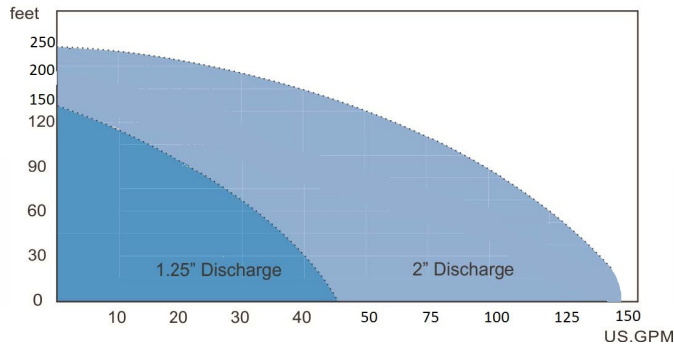
Other

| | |
|-------------------------|-----------|
| Control Panels • Basins | 18 |
| GRS • Accessories | 19 |

Product Nomenclature

| F | 2 | 1 | U | F | 2 | 1 | | | |
|------|-----------|-------|-------|-------|-------------|----|--|-------|----|
| Type | Discharge | Hp | Style | Float | 230 V | 1Ø | | | |
| 80 | AF | U | 2 | 3.7 | L | A | | 4 | 3 |
| Size | Series | Style | Pole | kW | Large Solid | — | | 460 V | 3Ø |

GF Series Curves



GF Series Features

- Triple seal design
- Cable entry with anti-wicking epoxy and compression grommet
- Thermal Auto-Cut 3Hp and below
- Moisture and Thermal Overload protection on 5Hp and above (includes 50GF22.2)
- 50 ft cable standard on 5Hp and above
- Single and three-phase motors available
- Cast iron motor housing
- B class motor standard 2Hp and below
- H class motor standard 5Hp and above
- Optional attached float on select models
- Internal capacitors on select models
- External capacitors on select models
- Stainless steel cutting assembly 50-60 Rockwell Hardened
- Optional horizontal discharge on 32GF Series models

| | Discharge | 1.25" • 2" |
|----------|---|--|
| MAX | Liquid Temp. Applications Submersion | 32–180° F Wastewater 100 ft |
| TYPE | Frequency Motor Insulation Protection Protector Bearing Mechanical Seal Lip Seal Impeller | 60 Hz 2P • Class B (≤3Hp) • Class H (≥5Hp) IP68 Auto-Cut • MTS & MS Ball Type, Double Lower Ball Bearing Double Mechanical Seals Silicon Vortex |
| MATERIAL | Radial Cutter Cutter Ring Main Shaft Mechanical Seal Casing Impeller Cable Optional | SUS440C SUS440C SUS420J2 • SUS403 Upper: Carbon/Ceramic Lower: Silicon/Silicon ASTM-48, Class 30 ASTM-48, Class 30 VCT or H07RN-7 or SJOW/SOW Float Switch (≤3Hp) • DN40 Casing 2" Horizontal/Vertical Discharge • Seal leak and Overtemp Standard >5hp |

| MAX | | | | | |
|------------|-----|-------|-----|------|------|
| Model | HP | Dis. | Ø | Head | Flow |
| 32GF21.0 | 1 | 1.25" | 1/3 | 67 | 32 |
| 32GF21.5 | 2 | 1.25" | 1/3 | 85 | 44 |
| 32GF21.5H | 2 | 1.25" | 1/3 | 102 | 34 |
| 32GF22.2 | 3 | 1.25" | 1/3 | 109 | 45 |
| 32GF22.2H | 3 | 1.25" | 1/3 | 131 | 35 |
| 32GFR22.2 | 3 | 1.25" | 1 | 109 | 45 |
| 32GFR22.2H | 3 | 1.25" | 1 | 131 | 35 |
| *50GF22.2 | 3 | 2" | 1/3 | 81 | 85 |
| *50GF23.7 | 5 | 2" | 1/3 | 120 | 86 |
| *50GF24.5 | 6 | 2" | 1/3 | 145 | 89 |
| 50GF25.5 | 7.5 | 2" | 3 | 127 | 140 |
| 50GF27.5 | 10 | 2" | 3 | 179 | 140 |
| 50GF211 | 15 | 2" | 3 | 249 | 144 |

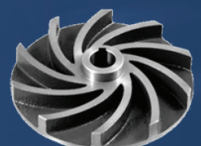
* Requires external capacitors



vortex impeller



radial cutter • cutter ring



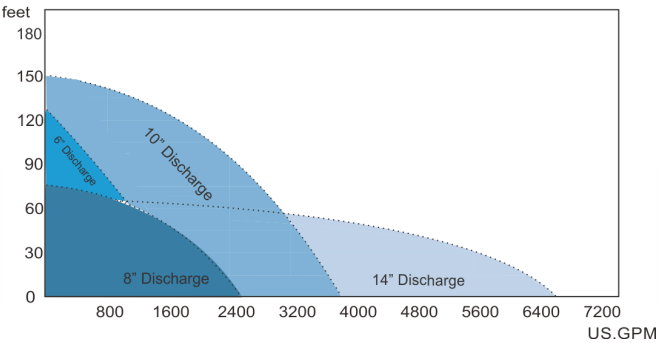
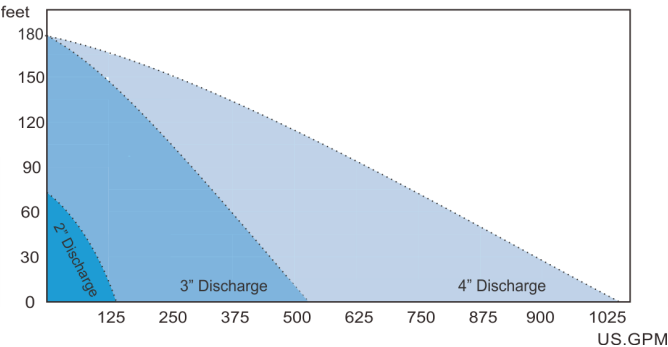
vortex impeller

AF Series

Submersible Sewage/Wastewater Pumps

02

AF Series Curves



AF Series Features

- Triple seal design
- Cable entry with anti-wicking epoxy and compression grommet
- Thermal Auto-Cut 3Hp and below
- Moisture and Thermal Overload protection on 5Hp and above (includes 80/100AFE42.2)
- 50 ft Cables on 5Hp and above
- Single and three-phase motors available
- 2, 4, and 6 Pole motors available

- Cast Iron motor housing
- B class motors available 2Hp and below
- H class motors available 5Hp and above
- Optional attached float on select models
- Internal capacitors on select models
- External capacitors on select models
- Anti air-locking device on select models

| | Discharge | 2" • 3" • 4" • 6" • 8" • 10" • 14" |
|----------|---|--|
| MAX | Liquid Temp. Applications Submersion | 32–180° F Municipal & Industrial Wastewater 100 ft |
| TYPE | Frequency Motor Insulation Protection Protector Bearing Mechanical Seal Lip Seal Impeller | 60 Hz 2P–6P • Air-Filled Motor Class B (≤3Hp) • Class H (≥5Hp) IP68 Minature Thermal Sensor (MTS) • Overtemp Moisture Sensor (MS) • Auto-Cut ≤3Hp Ball Type Double Mechanical Seals Silicon Enclosed-channel • Semi-Open • Vortex |
| MATERIAL | Upper Cover Motor Frame Main Shaft Mechanical & Lip Seals Casing Impeller Wear Ring Cable Optional | ATSM-48, Class 30 ATSM-48, Class 30 SUS420J2 • SUS403 • SUS410 Upper: Carbon/Ceramic Lower: Silicon/Silicon ASTM-48, Class 30 ASTM-48, Class 30 Brass SOW 30 ft & 50 ft • 10 Hp: VCT/SJOW/SOW • 10–30Hp: H07RN-F Seal Leak & Thermal Protection (Standard for ≥5Hp) |

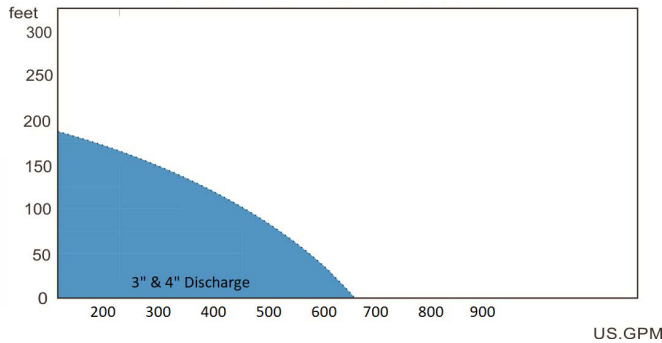
| MAX | | | | | | |
|---------|--------|------|-----|------|------|---------|
| Model | HP | Dis. | Ø | Head | Flow | Solids |
| 50AFU | 0.5–3 | 2" | 1/3 | 66 | 138 | 1.5–2" |
| 80AFP | 2–15 | 3" | 1/3 | 178 | 518 | 1.25–2" |
| 80AFU | 2–15 | 3" | 1/3 | 137 | 460 | 2–3" |
| 80AFE | 3–5 | 3" | 1/3 | 58 | 400 | 3" |
| 100AFE | 1.5–40 | 4" | 3 | 178 | 1190 | 3" |
| 100AFU | 7.5–10 | 4" | 3 | 64 | 656 | 4" |
| AF-6" | 10–20 | 6" | 3 | 122 | 1570 | 3" |
| 150AFE | 7.5–40 | 6" | 3 | — | — | — |
| AF-8" | 15–20 | 8" | 3 | 75 | 2450 | 3" |
| AF-10" | 30–75 | 10" | 3 | 150 | 3700 | 3" |
| *AF-14" | 30–60 | 14" | 3 | 66 | 7850 | 4.75" |

COMING SOON

*Optional 16" discharge



AFC Series Curves



AFC Series Features

- Triple seal design
- Cable entry with anti-wicking epoxy and compression grommet
- Thermal Auto-Cut 3Hp and below
- Moisture and Thermal Overload Protection on 5Hp and above (includes 80/100AFC42.2)
- 50 ft Cables on 5Hp and above
- Single and three-phase motors available
- 2 and 4 Pole motors available
- Cast Iron Motor Housing
- Air-filled motors
- B class 2Hp and below
- H class 5Hp and above
- Optional attached float on select models
- Internal capacitors on select models
- External capacitors on select models
- Anti air-locking device on select models
- Tungsten Carbide cutting edge on impeller

| | Discharge | 3" |
|-----------------|---|--|
| MAX | Liquid Temp. Applications Submersion | 32–180° F Sewage 100 ft |
| TYPE | Frequency Motor Insulation Protection Protector Bearing Mechanical Seal Lip Seal Impeller | 60 Hz 2 & 4P • Air-Filled Motor Class B (≥5Hp: Class H) IP68 Auto-cut (≥5Hp: MTS & MS) Ball Type Double Mechanical Seals Silicon Semi-Open + Tungsten Cutting Tips |
| MATERIAL | Upper Cover Motor Frame Main Shaft Mechanical Seal Casing Impeller Casing Cover Footing Cable | ASTM-48, Class 30 ASTM-48, Class 30 SUS403 Upper: Carbon/Ceramic Lower: Silicon/Silicon ASTM-48, Class 30 ASTM-48, Class 30 + Tungsten ASTM-48, Class 30 + Heat FCD450 VCT or H07RN-F or SJOW/SOW |

| — MAX — | | | | | | |
|-------------|-----|------|-----|------|------|--------|
| Model | HP | Dis. | Ø | Head | Flow | Solids |
| 80AFC21.5 | 2 | 3" | 1/3 | 52 | 244 | 2.5" |
| 80AFC22.2 | 3 | 3" | 1/3 | 65 | 280 | 2.5" |
| *80AFC23.7A | 5 | 3" | 1/3 | 94 | 342 | 2.5" |
| 80AFC25.5 | 7.5 | 3" | 3 | 115 | 382 | 2.5" |
| 80AFC27.5 | 10 | 3" | 3 | 140 | 440 | 2.5" |
| 80AFC211 | 15 | 3" | 3 | 180 | 490 | 2.5" |
| 80AFC41.5 | 2 | 3" | 3 | — | — | 2.5" |
| 80AFC42.2 | 3 | 3" | 3 | 48 | 290 | 2.5" |
| 80AFC43.7 | 5 | 3" | 3 | 61 | 395 | 2.5" |
| 100AFC45.5 | 7.5 | 4" | 3 | 73 | 530 | 2.5" |
| 100AFC47.5 | 10 | 4" | 3 | 79 | 660 | 2.5" |

* Requires external capacitors



Tungsten Carbide Impeller



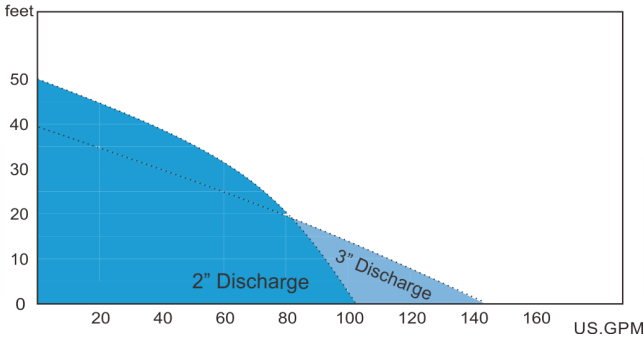
Cutter Casing Cover

F Series

Submersible Effluent Pumps

04

F Series Curves



| | Discharge | 2" • 3" |
|----------|---|--|
| MAX | Liquid Temp. Applications Submersion | 32–104° F Effluent/drainage 100 ft |
| TYPE | Frequency Motor Insulation Protection Protector Bearing Mechanical Seal Lip Seal Impeller | 60 Hz 2P • Air-Filled Motor (F-05A: Oil motor) Class B IP68 Auto-Cut (0.5Hp 1Ø: Thermal) Ball Type Double Mechanical Seals (F-05A: Single Seal) Silicon Vortex, Semi-Open (U/P) |
| MATERIAL | Upper Cover Motor Frame Main Shaft Mechanical Seal Casing Impeller Cable | ASTM-48, Class 30 SUS304 SUS410 Upper: Carbon/Ceramic Lower: Silicon/Silicon ASTM-48, Class 30 ASTM-48, Class 30 (F-05A: PA) VCT or H07RN-7 or SJOW/SOW |

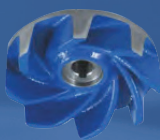
F Series Features

- Triple seal design
- Cable entry with anti-wicking epoxy and compression grommet
- Thermal Auto-Cut
- Single and three-phase motors available
- Stainless steel motor housing
- Air filled-motors (F-05A Oil-Filled)
- Optional attached float
- Internal Capacitors standard

| Model | HP | Dis. | Ø | MAX | | |
|--------|-----|------|-----|------|------|--------|
| | | | | Head | Flow | Solids |
| F-05A | 0.5 | 2" | 1 | 40 | 58 | 0.5" |
| F-05U | 0.5 | 2" | 1/3 | 31 | 74 | 1.5" |
| F-05UL | 0.5 | 2" | 1/3 | 33 | 95 | 2" |
| F-21U | 1 | 2" | 1/3 | 45 | 93 | 1.5" |
| F-21UL | 1 | 2" | 1/3 | 33 | 95 | 2" |
| F-21P | 1 | 2" | 1/3 | 50 | 103 | 1" |
| F-31U | 1 | 3" | 1/3 | 38 | 143 | 1.25" |



Guide Rail System for F Series

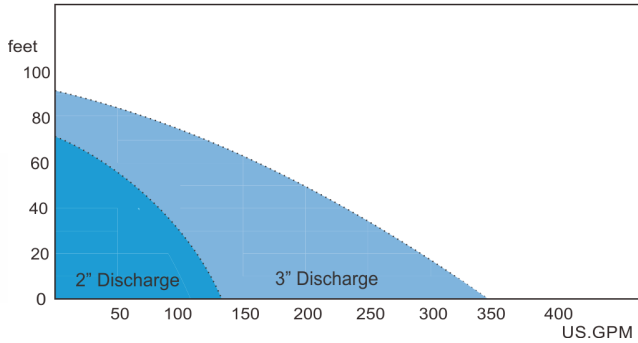


U-Type Impeller

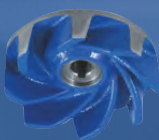


P-Type Impeller

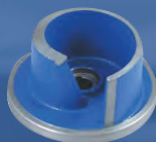
FN Series Curves



| Discharge | | 2" • 3" |
|-----------|--------------------------------------|---|
| MAX | Liquid Temp. Applications Submersion | 32–104° F Wastewater/effluent 100 ft |
| | | 60 Hz |
| TYPE | Frequency Motor | 2P • Air-Filled Motor |
| | Insulation | Class B (5Hp: Class H) |
| | Protection | IP68 |
| | Protector | Auto-Cut |
| | Bearing | Ball Type |
| | Mechanical Seal | Double Mechanical Seals |
| | Lip Seal | Silicon |
| MATERIAL | Impeller | Semi-Open, Vortex |
| | Upper Cover | ASTM-48, Class 30 |
| | Motor Frame | SUS304 |
| | Main Shaft | SUS403 |
| | Mechanical Seal | Upper: Carbon/Ceramic Lower: Silicon/Silicon |
| | Casing | ASTM-48, Class 30 |
| | Impeller | ASTM-48, Class 30 |
| | Cable | VCT or H07RN-7 or SJOW/SOW |



U-Type Impeller



P-Type Impeller

FN Series Features

- Triple seal design
- Cable entry with Anti-wicking epoxy and compression grommet
- Thermal Auto-Cut
- Single and three-phase motors available
- Stainless steel motor housing
- Air-filled motors
- B Class motor option available on 2Hp and below
- Optional attached float
- Internal capacitors
- Anti air-locking device on select models

| MAX | | | | | | |
|---------|----|------|-----|------|------|--------|
| Model | HP | Dis. | Ø | Head | Flow | Solids |
| FN-22U | 2 | 2" | 1/3 | 67 | 112 | 1.5" |
| FN-22UL | 2 | 2" | 1/3 | 53 | 122 | 2" |
| FN-23U | 3 | 2" | 1/3 | 81 | 125 | 1.5" |
| FN-23UL | 3 | 2" | 1/3 | 63 | 138 | 2" |
| FN-32U | 2 | 3" | 1/3 | 51 | 174 | 2" |
| FN-32P | 2 | 3" | 1/3 | 51 | 250 | 1.5" |
| FN-33U | 3 | 3" | 1/3 | 64 | 208 | 2" |
| FN-33P | 3 | 3" | 1/3 | 68 | 292 | 1.5" |
| FN-35U | 5 | 3" | 3 | 85 | 262 | 2" |
| FN-35P | 5 | 3" | 3 | 90 | 345 | 1.5" |
| FN-32UL | 2 | 3" | 1/3 | 32 | 192 | 3" |
| FN-33UL | 3 | 3" | 1/3 | 31 | 228 | 3" |
| FN-35UL | 5 | 3" | 1/3 | 48 | 285 | 3" |



Suction Lift Series

Self-Priming Pumps

06



Series Features

- Capable of priming without flap valve
- Non-clog design capable of handling large solids
- Lubrication of mechanical seal cavity makes performance more reliable
- Multiple rotary speeds, reliable operation, easy maintenance, and long product life
- Equipped with pressure relief valve
- Removable cover plate with easy grip handle
- Removable rotating assembly
- Replacable wear plate
- Multiple skid configurations available

| Discharge | | 2" • 3" • 4" • 6" • 8" • 10" |
|------------|------------------------|--|
| Conditions | Density of Medium | 1.0–1.38*103Kg/m³ |
| | PH | Within 5–9 |
| | Solid Max Diameter | >3" |
| | Max Suction Lift | 25 ft |
| | Volume Ratio of Solids | 2% |
| TYPE | Impeller Diameter | 6–18" |
| | Rotary Speed | P Series: 550 RPM–2150 RPM H Series: 850 RPM–3600 RPM |
| | Flow Rates | P Series: 20 GPM–5500 GPM H Series: 35 GPM–1325 GPM |
| | Head | P Series: 15–140 ft H Series: 25–192 ft |
| | Horsepower | P Series: 1Hp–100Hp H Series: 1.5Hp–75Hp |
| | Solid Passing | P Series: 0.75–3" H Series: 1.25" |
| | Materials | P Series: Cast Iron, Ductile Iron, Stainless Steel, Cast Steel, Aluminium, Bronze H Series: Cast Iron, ADI, CD4MCU, 316 Stainless Steel, Alloy 20, C276 |

| MAX | | | | | |
|-------|--------|------|---|------|------|
| Model | HP | Dis. | Ø | Head | Flow |
| H-3 | 1.5–25 | 3" | 3 | 210 | 375 |
| H-4 | 3–40 | 4" | 3 | 195 | 650 |
| H-6 | 5–75 | 6" | 3 | 190 | 1350 |
| P-2 | 1–10 | 2" | 3 | 128 | 210 |
| P-3 | 1–20 | 3" | 3 | 116 | 465 |
| P-4 | 1–30 | 4" | 3 | 117 | 730 |
| P-6 | 2–40 | 6" | 3 | 110 | 530 |
| P-8 | 7.5–75 | 8" | 3 | 112 | 2650 |
| P-10 | 10–100 | 10" | 3 | 130 | 3450 |



rotating assembly



semi-open impeller



flap valve assembly

Series Highlights

- **Mobility** Our trailer-mounted units are made to go where you go.
- **Versatility** We focus on modular design and use across multiple applications.
- **Durability** All configurations have been tested and verified in the toughest working conditions.
- **Efficiency** Our pumps are designed to work in any environment while reducing fuel consumption.
- **Simplicity** All parts and consumables are easily accessible for service and repair.

Specifications

- **Discharge** 4, 6, 8, 10, 12"
- **Horsepower** 30–225
- **Max Head** 350 ft
- **Max Flow** 4500 GPM

Features

- High Capacity Diaphragm Pump provides automatic and fast priming
- Oil-Bathed Mechanical Seals allows dry-running capability without damaging the shaft seals
- Tier 4 Final Engine comes standard with all DBP units and meets the latest engine emission standards
- Lifting Beam comes standard with all DBP units
- Different Skid Styles configured to meet your needs
- High Efficiency Hydraulic End ensures lower fuel consumption
- Hinged Pump Housing allows for easy servicing of pump



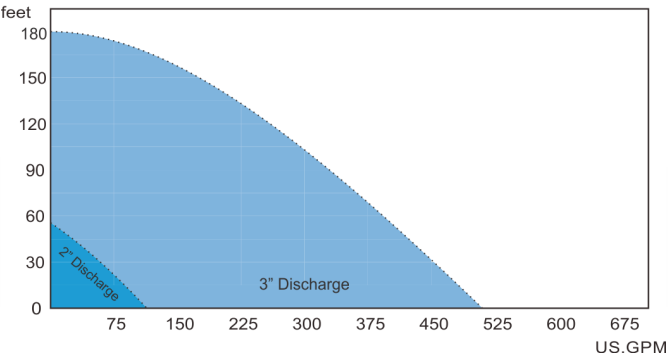
Various configurations of trailer-mounted, skid, and permanent-mounted DBP units.

SA/SF Series

Submersible Stainless Steel Pumps

08

SA/SF Series Curves



SA/SF Series Features

- Triple seal design
- Cable entry with anti-wicking epoxy and compression grommet
- Thermal Auto-Cut 3hp and below
- Moisture and thermal overload protection on 5Hp and above
- 50 ft cables standard on 5Hp and above
- Single and three-phase motors available
- Complete 316 or 304 stainless steel construction
- Air-filled motors
- B Class motor option available on 2Hp and below
- H Class Motor motor option available on 5Hp and above
- Optional attached float on select models
- Internal capacitors on select models
- Anti air-locking device on select models
- Standard with Viton O-Rings

| | Discharge | 2" • 3" |
|----------|--|--|
| MAX | Liquid Temp. Applications Submersion | 32–180° F Corrosive fluids 100 ft |
| TYPE | Frequency Motor Insulation Protection Protector Bearing Mechanical Seal Lip Seal Impeller | 60 Hz 2P • Air-Filled Motor Class B (≤3Hp) • Class H (≥5Hp) IP68 Auto-cut • MTS & MS (≥5Hp) Ball Type Double Mechanical Seals Silicon Semi-Open, Vortex |
| MATERIAL | Upper Cover Motor Frame Main Shaft Mechanical Seal O-Ring Casing Impeller Casing Cover Cable | SCS13 (0.5 Hp) • SCS140 SUS316 SUS316 Upper: Carbon/Ceramic Lower: Silicon/Silicon Viton SCS13 (0.5 Hp) • SCS140 SCS14 SCS13 (0.5 Hp) • SCS140 VCT or H07RN-F or SJOW/SOW |

| MAX | | | | | |
|---------|-------|------|-----|------|------|
| Model | HP | Dis. | Ø | Head | Flow |
| 50SA | 0.5–1 | 2" | 1/3 | 53 | 96 |
| 80SA | 2–15 | 3" | 1/3 | 182 | 512 |
| 50SFU | 0.5–1 | 2" | 1/3 | 49 | 97 |
| 80SFU/P | 2–15 | 3" | 1/3 | 180 | 515 |



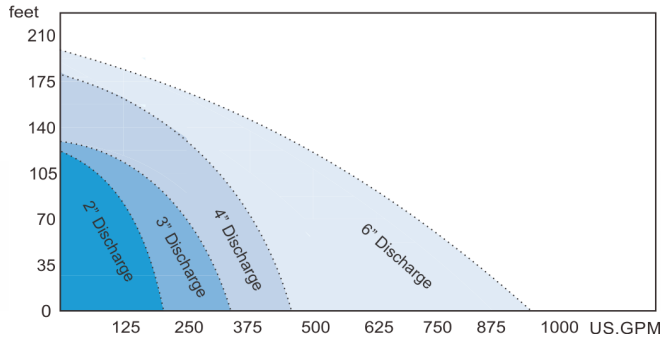
stainless steel elbows

HD/BD Series

Submersible Dewatering Pumps

09

HD/BD Series Curves



HD Series Features

- Triple seal design
- Cable entry with anti-wicking epoxy and compression grommet
- Thermal Auto-Cut 3Hp and below
- 50 ft Cables on 5Hp and above
- Single and three-phase motors available
- Stainless steel outer jacket
- Cast Iron Motor Housing
- Air-filled motors
- B class motor option available on 2Hp and below
- H class motor option available on 3Hp and above
- Internal Capacitors on select models
- Multiple discharge options
- High Chrome alloy steel impeller and wear ring with 55-60 Rockwell Hardened

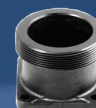
| | Discharge | 2" • 3" • 4" • 6" |
|-----------------|---|---|
| MAX | Liquid Temp. Applications Submersion | 32–180° F Dewatering 100 ft |
| TYPE | Frequency Motor Insulation Protection Protector Bearing Mechanical Seal Impeller Lip Seal | 60 Hz 2P • Air-Filled Motor Class B (≤3Hp) • Class H (≥5Hp) IP68 Auto-cut Ball Type Double Mechanical Seals Semi-Open • Enclosed Channel Silicon |
| MATERIAL | Upper Cover Motor Frame Main Shaft Mechanical Seal Casing Impeller Wear Ring/Plate Cable | ASTM-48, Class 30 SUS304 • ASTM-48, Class 30 (≥5Hp) SUS403 • SUS20J2 (≥5Hp) Upper: Carbon/Ceramic Lower: Silicon/Silicon ASTM-48, Class 30 HiCrFC HiCrFC VCT or H07RN-F or SJOW/SOW |

| MAX | | | | | | |
|-----------|-----|------|-----|------|------|--|
| Model | HP | Dis. | Ø | Head | Flow | |
| 50HD21.1 | 1.5 | 2" | 1/3 | 65 | 113 | |
| 50HD21.5 | 2 | 2" | 1/3 | 76 | 135 | |
| 50HD22.2 | 3 | 2" | 1/3 | 93 | 158 | |
| 50HD23.7 | 5 | 2" | 3 | 122 | 198 | |
| 80HD21.5 | 2 | 3" | 1/3 | 64 | 228 | |
| 80HD22.2 | 3 | 3" | 3 | 75 | 265 | |
| 80HD23.7 | 5 | 3" | 3 | 105 | 270 | |
| 80HD25.5 | 7.5 | 3" | 3 | 132 | 332 | |
| 100HD23.7 | 5 | 4" | 3 | 82 | 405 | |
| 100HD25.5 | 7.5 | 4" | 3 | 105 | 505 | |
| 100HD27.5 | 10 | 4" | 3 | 135 | 492 | |
| 100HD211 | 15 | 4" | 3 | 179 | 422 | |
| 100BD222 | 30 | 4" | 3 | — | — | |
| 150HD215 | 20 | 6" | 3 | 190 | 608 | |
| 150BD222 | 30 | 6" | 3 | 170 | 950 | |

COMING SOON



LOH



LOT



LKF2



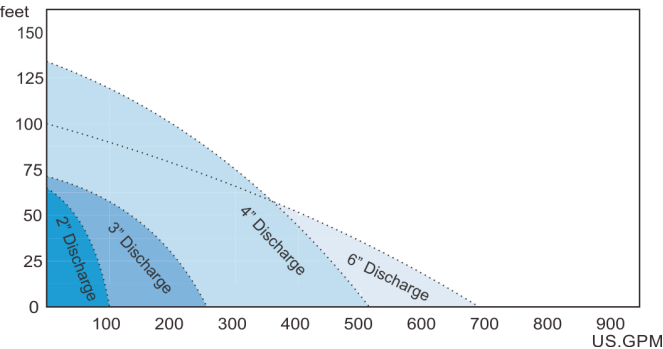
LKF3

IC Series

Submersible Dewatering Pumps

10

IC Series Curves



IC Series Features

- Triple seal design
- Cable entry with anti-wicking epoxy and compression grommet
- Thermal Auto-Cut 3Hp and below
- 50 ft cables on 5Hp and above
- Single and three-phase motors available
- Stainless steel outer jacket
- Cast iron motor housing
- Air-filled motors
- B class motor option available on 2Hp and below
- H class motor option available on 5Hp and above
- Internal capacitors on select models
- Multiple discharge options

| | Discharge | 2" • 3" • 4" • 6" |
|----------|---|--|
| MAX | Liquid Temp. Applications Submersion | 32–180° F Irrigation & Dewatering 100 ft |
| TYPE | Frequency Motor Insulation Protection Protector Bearing Mechanical Seal Lip Seal Impeller | 60 Hz 2P • Dry Motor Class B • Class H (≥5Hp) IP68 Auto-cut Ball Type Double Mechanical Seals Silicon Enclosed Channel, Semi-Open |
| MATERIAL | Upper Cover Motor Frame Mechanical Seal Shaft End Impeller Casing Cable | ASTM-48, Class 30 SUS403 • ASTM-48, Class 30 (≥2Hp) Upper: Carbon/Ceramic Lower: Silicon/Silicon SUS403 • SUS304 (≥5Hp) Chrome Steel • Bronze (IC-215) ASTM-48, Class 30 VCT or H07RN-F or SJOW/SOW |

| MAX | | | | | |
|---------|-----|------|-----|------|------|
| Model | HP | Dis. | Ø | Head | Flow |
| IC-215 | 1.5 | 2" | 1/3 | 64 | 100 |
| IC-32B | 2 | 3" | 1/3 | 61 | 227 |
| IC-33B | 3 | 3" | 1/3 | 70 | 255 |
| IC-43B | 3 | 4" | 3 | 61 | 355 |
| IC-45B | 5 | 4" | 3 | 81 | 420 |
| IC-46B | 6 | 4" | 3 | 84 | 470 |
| IC-48 | 7.5 | 4" | 3 | 105 | 505 |
| IC-410 | 10 | 4" | 3 | 135 | 495 |
| *IC-610 | 10 | 6" | 3 | 100 | 690 |

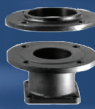
* 2–4" discharge connection included on pump



LOH



LOT

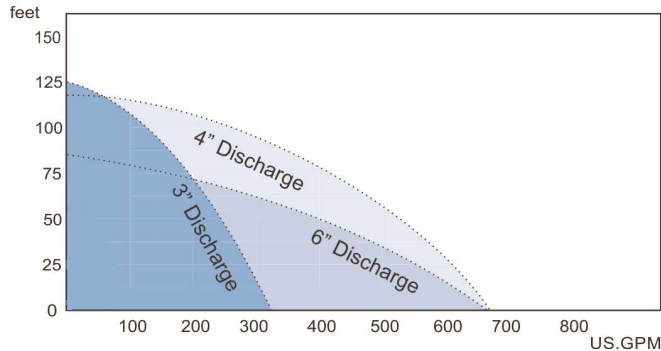


LKF2



LKF3

HDG Series Curves



HDG Series Features

- Triple seal design
- Cable entry with anti-wicking epoxy and compression grommet
- Thermal Auto-Cut 3Hp and below
- 50 ft cables on 5Hp and above
- Single and three-phase motors available
- Stainless steel outer jacket
- Cast iron motor housing
- Air-Filled motors
- B class motor option available on 2Hp and below
- H class motor option available on 5Hp and above
- Internal capacitors on select models
- Multiple discharge options
- High chrome alloy steel impeller & wear ring w/ 55-60 Rockwell Hardened
- Hardened agitator

| | Discharge | 3" • 4" • 6" |
|-----------------|---|--|
| MAX | Liquid Temp. Applications Submersion | 32–180° F Dewatering 100 ft |
| TYPE | Frequency Motor Insulation Protection Protector Bearing Mechanical Seal Impeller Lip Seal | 60 Hz 2P • Air-Filled Motor Class B • Class H (≥5Hp) IP68 Auto-cut Ball Type Double Mechanical Seals Semi-Open • Enclosed Channel Silicon |
| MATERIAL | Upper Cover Motor Frame Main Shaft Mechanical Seal Impeller Casing Agitator Cable | ASTM-48, Class 30 ASTM-48, Class 30 SUS403 • SUS304 (≥5Hp) Upper: Carbon/Ceramic Lower: Silicon/Silicon HiCrFC HiCrFC FCD-700 VCT or H07RN-F or SJOW/SOW |

| MAX | | | | | |
|------------|-----|------|-----|------|------|
| Model | HP | Dis. | Ø | Head | Flow |
| 80HDG21.5 | 2 | 3" | 1/3 | 52 | 215 |
| 80HDG22.2 | 3 | 3" | 1/3 | 61 | 255 |
| 80HDG23.7 | 5 | 3" | 3 | 93 | 255 |
| 80HDG25.5 | 7.5 | 3" | 3 | 125 | 320 |
| 100HDG25.5 | 7.5 | 4" | 3 | 90 | 495 |
| 100HDG27.5 | 10 | 4" | 3 | 119 | 670 |
| 150HDG27.5 | 10 | 6" | 3 | 85 | 670 |

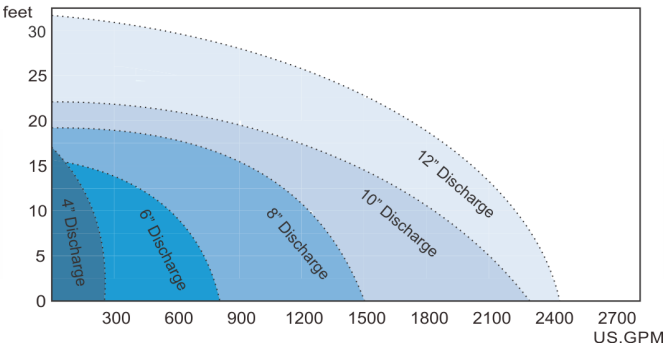


L Series

Submersible Large Volume Pumps

12

L Series Curves



L Series Features

- Triple seal design
- Cable entry with anti-wicking epoxy and compression grommet
- Thermal Auto-Cut 3Hp and below
- 50 ft Cables on 5Hp and above
- Single and three-phase motors available
- Stainless steel outer jacket
- Cast iron motor housing
- Air-filled motors
- B class motor option available on 2Hp and below
- H class motor option available on 5Hp and above
- Internal capacitors on select models
- Axial flow and mixed flow impeller designs

| | Discharge | 4" • 6" • 8" • 10" • 12" |
|----------|---|---|
| MAX | Liquid Temp. Applications Submersion | 32–180° F Irrigation/Dewatering 100 ft |
| TYPE | Frequency Motor Insulation Protection Protector Bearing Mechanical Seal Lip Seal Impeller | 60 Hz 2P • Air-Filled Motor (0.5–1Hp) 4P • Air-Filled Motor (2–20Hp) Class B (≤3Hp) • Class H (≥7.5Hp) IP68 Auto-cut (≤3Hp) • None (≥7.5Hp) Ball Type Double Mechanical Seals Silicon Axial Flow (0.5–10Hp) • Mix-Flow (15–20Hp) |
| MATERIAL | Outer Cover Upper Cover Motor Frame Main Shaft Mechanical Seal Impeller Casing Cable | SUS304 ASTM-48, Class 30 (≤3Hp) • BC6 (≥7.5Hp) ASTM-48, Class 30 (≤3Hp) • SUS304 (≥7.5Hp) SUS403 Upper: Carbon/Ceramic Lower: Silicon/Silicon (≤3Hp) Carbon/Ceramic (≥7.5Hp) ALBC3 ASTM-48, Class 30 VCT or H07RN-F or SJOW/SOW |

| | Model | HP | Dis. | Ø | Head | Flow |
|--|---------|-----|------|-----|------|------|
| | L-405A | 0.5 | 4" | 1/3 | 12 | 217 |
| | L-41A | 1 | 4" | 1/3 | 17 | 260 |
| | L-62A | 2 | 6" | 3 | 14 | 550 |
| | L-63A | 3 | 6" | 3 | 16 | 800 |
| | L-200A | 7.5 | 8" | 3 | 19 | 1500 |
| | L-250A | 10 | 10" | 3 | 22 | 1720 |
| | L-250LA | 15 | 10" | 3 | 20 | 2320 |
| | L-300A | 15 | 12" | 3 | 27 | 2270 |
| | L-1220 | 20 | 12" | 3 | 32 | 2475 |



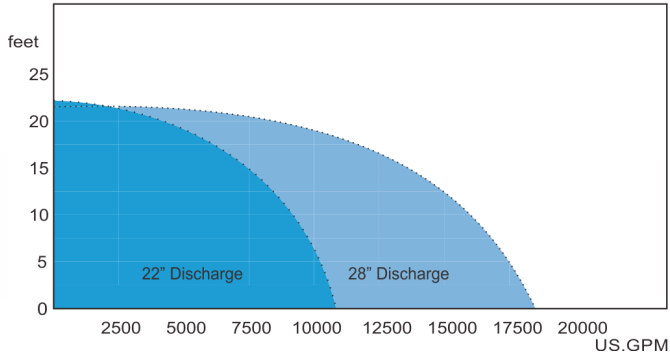
Mix Flow Impeller



Axial Flow Impeller



LA Series Curves



LA Series Features

- Triple seal design
- Cable entry with anti-wicking epoxy and compression grommet
- Standard 50 Ft power cables
- Cast Iron Motor Housing
- Air-filled motors
- H class motor option available
- Stand type or well type pump versions available
- Axial Flow Impeller

| | Discharge | 22" • 28" |
|----------|-----------------|--|
| MAX | Liquid Temp. | 32–180° F |
| | Applications | Irrigation/Dewatering |
| | Submersion | 100 ft |
| TYPE | Frequency | 60 Hz |
| | Motor | 10P • Air-Filled Motor (50–60Hp) 12P • Air-Filled Motor (75–100Hp) |
| | Insulation | Class H |
| | Protection | IP68 |
| | Protector | MTS & MS • Sacrificial Anode |
| | Bearing | Ball Type |
| | Mechanical Seal | Double Mechanical Seals |
| | Lip Seal | Silicon |
| MATERIAL | Impeller | Axial Flow |
| | Wear Ring | SAS13 (≤ 60 Hp) • ALBC3 (≥ 75 Hp) |
| | Upper Cover | ASTM-48, Class 30 |
| | Motor Frame | ASTM-48, Class 30 |
| | Main Shaft | SUS20J2 |
| | Mechanical Seal | Upper: Silicon Carbide/Silicon Carbide Lower: Silicon Carbide/Silicon Carbide |
| | Impeller | SCS13 |
| | Casing | ASTM-48, Class 30 |
| | Agitator | FCD-700 |
| | Cable | VCT or H07RN-F or SJOW/SOW |

| Model | HP | Dis. | Ø | Head | Flow |
|----------|-----|------|---|------|--------|
| LA-2250 | 50 | 22" | 3 | 16 | 10,498 |
| LA-2260 | 60 | 22" | 3 | 21 | 9,050 |
| LA-2875 | 75 | 28" | 3 | 19 | 16,250 |
| LA-28100 | 100 | 28" | 3 | 22 | 18,400 |



Stand Type

Well Type



Sacrificial Anode



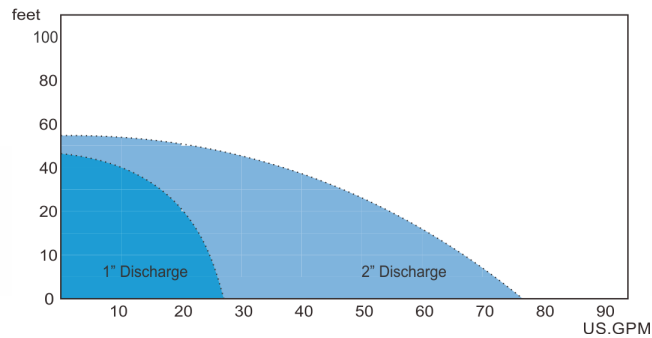
Axial Flow Impeller

GDR • GDS Series

Submersible Portable Dewatering Pumps

14

GDR • GDS Curves



| Model | HP | Dis. | Ø | MAX | |
|---------|-----|------|---|------|------|
| | | | | Head | Flow |
| GDR-400 | 0.5 | 1/2" | 1 | 46 | 26 |
| GDS-400 | 0.5 | 1/2" | 1 | 40 | 60 |
| GDS-750 | 1 | 1/2" | 1 | 54 | 76 |

| | Discharge | 1" • 2" |
|----------|--|--|
| MAX | Liquid Temp. Applications Submersion | 32–104° F Dewatering 33 ft |
| TYPE | Frequency Motor Insulation Protection Protector Bearing Mechanical Seal Impeller | 60 Hz 2P • Air-Filled Motor Class B IP68 Auto-Cut Ball Type Double Mechanical Seals Vortex |
| MATERIAL | Upper Cover Motor Frame Shaft End Stainer Mechanical Seal Casing Impeller Cable | Aluminum alloy Aluminum alloy SUS410 SUS304 Upper: Carbon/Ceramic Lower: Silicon/Silicon Synthetic rubber Urethane Rubber + SPCC VCT or H07RN-7 or SJOW/SOW |

GDS Features

- Designed for the construction industry
- Lightweight, portable, and durable
- Motor frame & mechanical seal bracket are made of aluminum alloy
- Features all new design with exchangeable discharges (vertical & horizontal orientations)
- Equipped with an auto-cut motor protector
- Automatic version available with built-in float switch to turn pump on and off
- Standard discharge: 2" LOT2-74

GDR Features

- Air-filled motor with rubber suction pads for residential removal as low as 1 mm (0.39"). Starts up at levels of 5mm
- Designed to remove water from flat surfaces
- Equipped with an auto-cut motor protector and water-cooling motor
- Impeller & hydraulic components made of durable urethane rubber
- Standard discharge: 1" LOT1-74

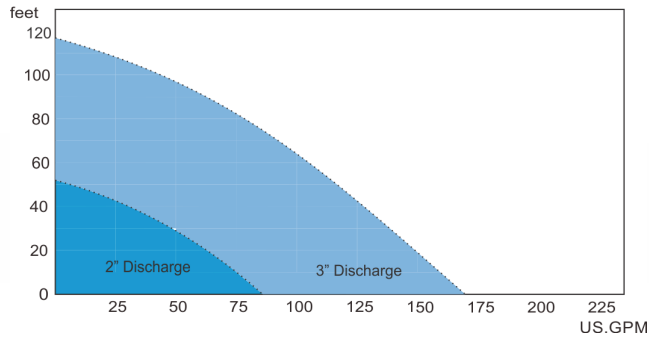


GDS Model



GDR Model

A Series Curves



| Discharge 2" • 3" | |
|-------------------|--|
| MAX | Liquid Temp. Applications Submersion |
| | 32–104° F Dewatering 100 ft |
| TYPE | Frequency Motor |
| | 60 Hz 2P • Air-Filled Motor (A-05A: Oil Motor) |
| | Insulation Protection |
| | Class B IP68 |
| | Protector Bearing Mechanical Seal |
| | Auto-Cut Ball Type Double Mechanical Seals (A-05A: Single Seal) |
| MATERIAL | Lip Seal Impeller |
| | Silicon Semi-Open |
| | Upper Cover Motor Frame |
| | ASTM-48, Class 30 SUS304 |
| | Main Shaft Mechanical Seal |
| | SUS410 (0.5–1Hp) • SUS430 (2–3Hp) Upper: Carbon/Ceramic Lower: Silicon/Silicon |
| | Casing Impeller Cable |
| | ASTM-48, Class 30 ASTM-48, Class 30 VCT or H07RN-7 or SJOW/SOW |

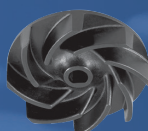
A Series Features

- Cable entry with anti-wicking epoxy and compression grommet
- Thermal Auto-Cut standard
- Single and three-phase motors available
- Stainless steel motor housing standard
- Anti air-locking device on select models
- Air-filled motors
- Internal capacitors standard

| MAX | | | | | | |
|-------|-----|------|-----|------|------|--------|
| Model | HP | Dis. | Ø | Head | Flow | Solids |
| A-05A | 0.5 | 2" | 1/3 | 40 | 58 | 0.25" |
| A-05B | 0.5 | 2" | 1/3 | 41 | 59 | 0.25" |
| A-05L | 0.5 | 2" | 1/3 | 36 | 77 | 0.25" |
| A-21 | 1 | 2" | 1/3 | 52 | 88 | 0.25" |
| A-31 | 1 | 3" | 1/3 | 38 | 143 | 0.25" |
| A-33H | 3 | 3" | 1 | 119 | 165 | 1" |



A Series Impeller



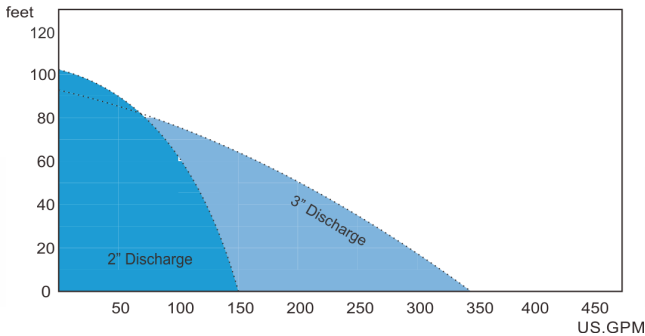
A Series Impeller

AN Series

Submersible Dewatering/Sump Pumps

16

AN Series Curves

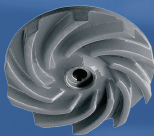


| | Discharge | 2" • 3" |
|----------|---|---|
| MAX | Liquid Temp. Applications Submersion | 32–180° F Dewatering/water features 100 ft |
| TYPE | Frequency Motor Insulation Protection Protector Bearing Mechanical Seal Lip Seal Impeller | 60 Hz 2P • Air-Filled Motor Class B (≤2Hp) • Class H (≥5Hp) IP68 Auto-Cut Ball Type Double Mechanical Seals Silicon Semi-Open, Vortex |
| MATERIAL | Upper Cover Motor Frame Main Shaft Mechanical Seal Casing Impeller Cable | ASTM-48, Class 30 SUS304 • ASTM-48, Class 30 SUS410 (≤1.5Hp) • SUS430 (≤5Hp) Upper: Carbon/Ceramic Lower: Silicon/Silicon ASTM-48, Class 30 ASTM-48, Class 30 VCT or H07RN-7 or SJOW/SOW |

AN Series Features

- Triple seal design
- Cable entry with anti-wicking epoxy and compression grommet
- Thermal Auto-Cut standard
- Single and three-phase motors available
- Stainless steel motor housing standard
- Anti air-locking device on select models
- Air-filled motors
- Internal capacitors standard

| Model | HP | Dis. | Ø | Head | Flow | Solids |
|---------|-----|------|-----|------|------|--------|
| AN-21 | 1 | 2" | 1/3 | 65 | 80 | 0.25" |
| AN-21.5 | 1.5 | 2" | 1/3 | 72 | 89 | 0.25" |
| AN-22 | 2 | 2" | 1/3 | 80 | 130 | 0.5" |
| AN-23 | 3 | 2" | 1/3 | 102 | 146 | 0.5" |
| AN-32 | 2 | 3" | 1/3 | 68 | 225 | 0.5" |
| AN-33 | 3 | 3" | 1/3 | 88 | 261 | 0.5" |
| AN-35 | 5 | 3" | 3 | 91 | 345 | 0.5" |



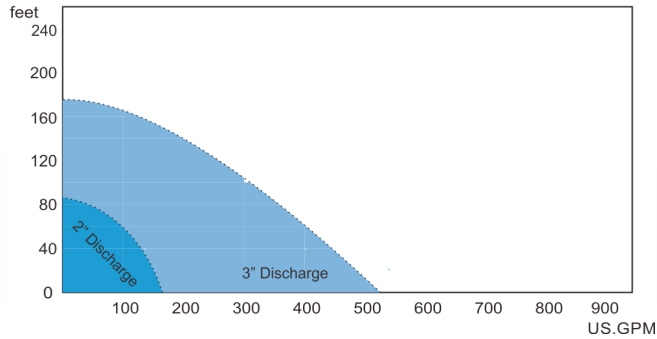
Vortex Impeller



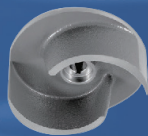
Semi-Open Impeller



AL Series Curves



| Discharge | | 2" • 3" |
|-----------|-----------------|---|
| MAX | Liquid Temp. | 32–180° F |
| | Applications | Dewatering |
| TYPE | Submersion | 100 ft |
| | Frequency | 60 Hz |
| MATERIAL | Motor | 2P (3600 RPM) • Air-Filled Motor |
| | Insulation | Class B (≤2Hp) • Class H (≥5Hp) |
| | Protection | IP68 |
| | Protector | Auto-Cut (5–15Hp: MTS & MS) |
| | Bearing | Ball Type |
| | Mechanical Seal | Double Mechanical Seals |
| | Lip Seal | Silicon |
| | Impeller | Semi-Open |
| | Upper Cover | ASTM-48, Class 30 |
| | Motor Frame | ASTM-48, Class 30 |
| | Main Shaft | SUS403 • SUS420J2 (≥7.5Hp) |
| | Mechanical Seal | Upper: Carbon/Ceramic Lower: Silicon/Silicon |
| | Casing | ASTM-48, Class 30 |
| | Impeller | ASTM-48, Class 30 |
| | Footing | ASTM-48, Class 30 |
| | Cable | VCT or H07RN-7 or SJOW/SOW |



Semi-Open Impeller

AL Series Features

- Triple seal design
- Cable entry with anti-wicking epoxy and compression grommet
- Thermal Auto-Cut standard
- Single and three-phase motors available
- Cast iron motor housing
- Anti air-locking device on select models
- Air-filled motors standard
- B Class motor option available on 2Hp and below
- H Class motor option available on 5Hp and above
- Moisture and thermal overload standard for 5HP and above
- Internal capacitors standard

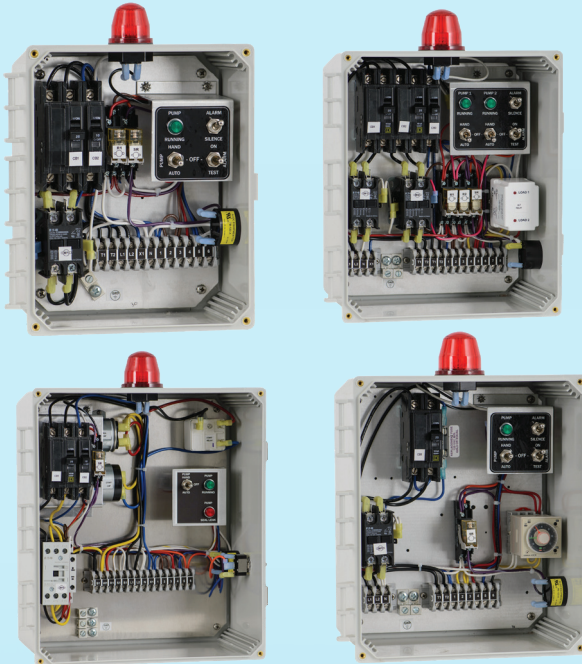
| MAX | | | | | | |
|-----------|-----|------|-----|------|------|--------|
| Model | HP | Dis. | Ø | Head | Flow | Solids |
| 50AL21.5 | 2 | 2" | 1/3 | 66 | 155 | 0.75" |
| 50AL22.2 | 3 | 2" | 1/3 | 86 | 176 | 0.75" |
| 80AL21.5 | 2 | 3" | 1/3 | 51 | 260 | 0.75" |
| 80AL22.2 | 3 | 3" | 1/3 | 67 | 295 | 0.75" |
| 80AL23.7A | 5 | 3" | 3 | 99 | 353 | 0.75" |
| 80AL25.5 | 7.5 | 3" | 3 | 117 | 405 | 0.75" |
| 80AL27.5 | 10 | 3" | 3 | 144 | 450 | 0.75" |
| 80AL211 | 15 | 3" | 3 | 175 | 520 | 0.75" |



Control Panels & Basins

18

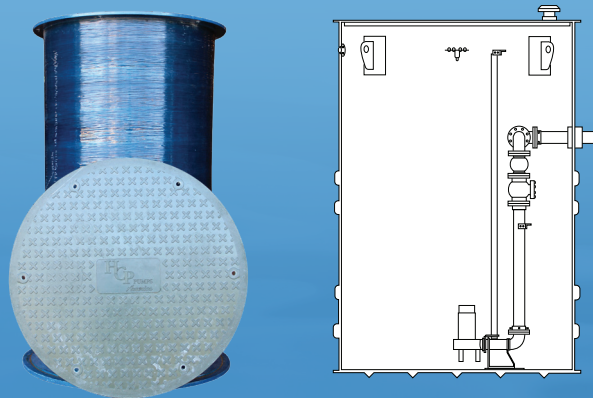
MISCELLANEOUS



DESCRIPTIONS

Control Panel Options

- Plug-In Pedestal/Post A
- Indoor/Outdoor High Water Alarms w/ Battery Backup
- Plug-in/Standard Junction Boxes
- Custom Junction/Connection Boxes
- Mechanical Control Duty Switches
- Standard & Heavy Duty Switches
- Narrow & Wide-Angle Float Switches
- Pump Up & Pump Down Float Switches
- Aerobic Control Panels
- Time Dosing Control Panels
- Grinder Control Panels
- Simplex & Duplex Panels w/ NEMA 4X Enclosures
- Complete 316 Stainless Steel NEMA 4X Enclosures
- Grasslin & Omron Timers
- UL & CSA Listed Products
- Full Line of Accessories & Parts



a sectional of our basins

Basin Features

- Manufactured to ASTM D3753 specifications
- Designed to withstand hydrostatic loading of 62.4 lbs/ft³
- Produced to withstand saturated soil loadings of 120 lbs/ft³
- Available in various widths from 18–120 inches and lengths from 24–300 inches
- Accessories include basin extensions, solid fiberglass lids, aluminum hatch covers, traffic-rated lids, detached valve vaults, and many more options
- Customized basin packages built to suit your needs

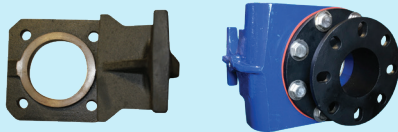
PROTECTION & ACCESSORIES

DESCRIPTIONS



Submersible Pump Guide Rail Systems

Automatic coupling system designed for submersible pump applications. The HCP GRS provides an easier and safer way to perform routine maintenance and repairs on equipment without the need for personnel to enter the wet well area. The HCP GRS adapter is mounted to the pump discharge, then lowered down by stainless steel chains and fasteners to align to the base elbow. Available in 2–16."



Guide Rail Adapters

Adapter (ADT) Flange conforms to JIS 10K/ANSI 125/DIN 2633. Cast iron construction and available in 2–6" flange construction.

Flygt Guide Rail Adapters Cast iron; available in 3, 4, 6, and 8" flange construction.



Auto-Cut Protector

The auto-cut protector is an automatic cut-off switch installed inside the motor. The switch automatically cuts off power to the motor in the event of overheating or a power surge. The switch automatically restarts the motor once the temperature drops to about 60–70°F



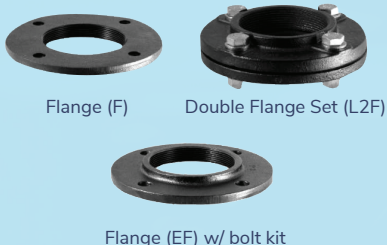
Overheat Protector

The overheat protector is an automatic cut-off switch built into the single-phase motor to monitor the temperature of the inner motor. The switch automatically cuts off power if the temperature exceeds the maximum allowable operating temperature (insulator class max. temperature). The switch automatically restarts the motor once the temperature drops to about 60–70°F



Moisture Sensor (MS)

The moisture sensor is used to detect moisture leakage through the mechanical seals. This occurs when the seal has been worn down or damaged; if moisture is found, the sensor will then trigger and transmit a signal to control panel. The control panel will then set off a warning signal and/or power off to protect the pump motor. If this occurs, schedule pump maintenance to replace the mechanical seal.



Flange (F)

Double Flange Set (L2F)

Flange (EF) w/ bolt kit

Flange & Flange Sets

Cast iron construction. Flange fittings for 1.25–8" discharge. Threads available: PT, PF, and NPT.

ADT Adapters



ADT 3x4B ANSI



ADT 3x3 ANSI



ADT 3x4B ANSI

Flygt Guide Rail Adapters



TA-80F



TA-100F



TA-150F

Impeller Types



E Style Impeller



U Style Impeller



P Style Impeller



P Style Impeller



Axial Flow Impeller



Axial Flow Impeller



Mix Flow Impeller



Cutter Impeller



Cutter Wear Plate

Notes



Agent

HCP Pumps America, Inc.

1723 Industrial Pkwy
Foley, AL 36535
251-943-8080

Website

hcppumpsofamerica.com