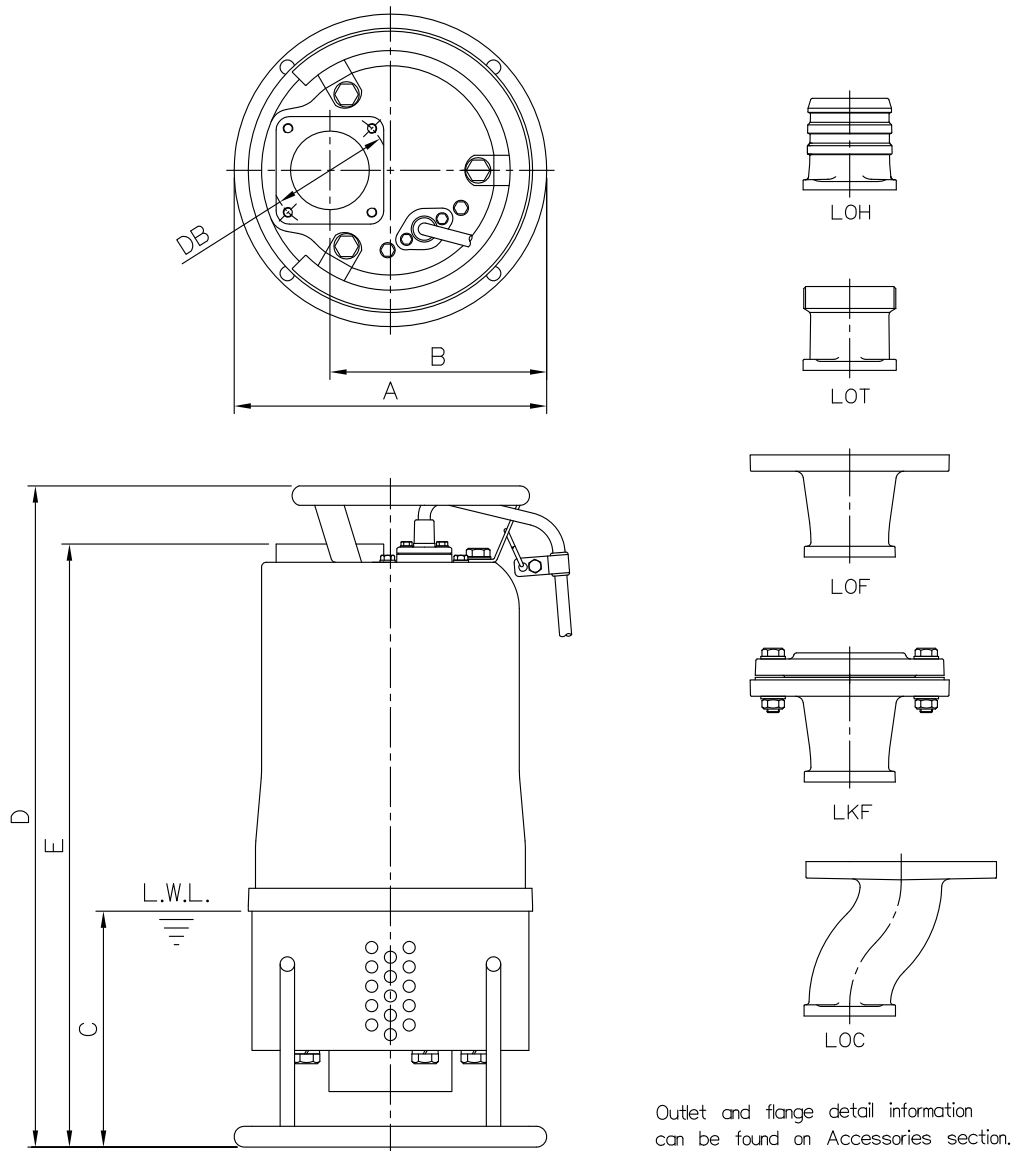


DIMENSIONS

No: S3AGN237030-00

MODEL: 80AGN21.5 / 22.2 / 23.7

1Ø & 3Ø



Outlet and flange detail information can be found on Accessories section.

Dimensions-mm

Weight:kg

Model	A	B	C	D	E	DB	WT1 50Hz/60Hz	Optional Outlet Accessories				
								LOH	LOT	LOF	LKF	LOC
80AGN21.5 1Ø	260	179	195	592	546	98	41	LOH3-98	LOT3-98	LOF3-150-160*98	LKF3-150*98	LOC3-150*98
80AGN21.5 3Ø	260	179	195	547	502	98	36	LOH3-98	LOT3-98	LOF3-150-160*98	LKF3-150*98	LOC3-150*98
80AGN22.2 1Ø	260	179	195	622	577	98	45	LOH3-98	LOT3-98	LOF3-150-160*98	LKF3-150*98	LOC3-150*98
80AGN22.2 3Ø	260	179	195	547	502	98	40/39	LOH3-98	LOT3-98	LOF3-150-160*98	LKF3-150*98	LOC3-150*98
80AGN23.7 3Ø	260	179	195	577	532	98	45	LOH3-98	LOT3-98	LOF3-150-160*98	LKF3-150*98	LOC3-150*98

Dimensions-inch

Weight:lb

Model	A	B	C	D	E	DB	WT1 50Hz/60Hz	Optional Outlet Accessories				
								LOH	LOT	LOF	LKF	LOC
80AGN21.5 1Ø	10¼	7½	7½	23½	21½	3¾	90	LOH3-98	LOT3-98	LOF3-150-160*98	LKF3-150*98	LOC3-150*98
80AGN21.5 3Ø	10¼	7½	7½	21½	19¾	3¾	79	LOH3-98	LOT3-98	LOF3-150-160*98	LKF3-150*98	LOC3-150*98
80AGN22.2 1Ø	10¼	7½	7½	24½	22½	3¾	99	LOH3-98	LOT3-98	LOF3-150-160*98	LKF3-150*98	LOC3-150*98
80AGN22.2 3Ø	10¼	7½	7½	21½	19¾	3¾	88/86	LOH3-98	LOT3-98	LOF3-150-160*98	LKF3-150*98	LOC3-150*98
80AGN23.7 3Ø	10¼	7½	7½	22½	20½	3¾	99	LOH3-98	LOT3-98	LOF3-150-160*98	LKF3-150*98	LOC3-150*98

L.W.L.:Lowest Running Water Level

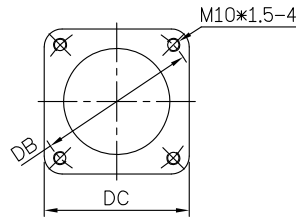
WT1:Pump Weight(Without Cable)

DIMENSIONS

No: SOAG000000-00

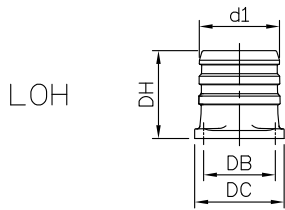
MODEL: Outlet (3"~6")

OUTLET CONNECTION

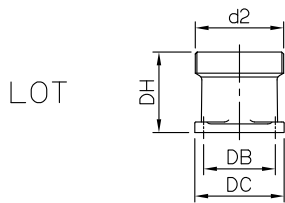


Model	mm		inch	
	DB	DC	DB	DC
1.5~3.7kW	98	89	3 7/8	3 1/2
5.5~7.5kW	127	112	5	4 1/8

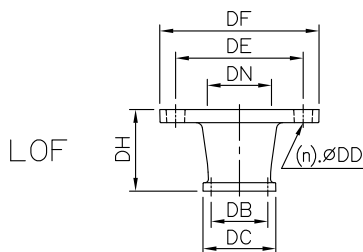
OPTIONAL OUTLET ACCESSORIES



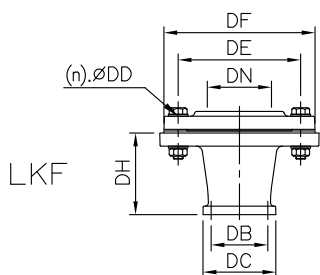
LOH	Dimensions-mm				kg	Dimensions-inch				lb
	d1	DB	DC	DH		d1	DB	DC	DH	
LOH3-98	80	98	89	100	2	3	3 7/8	3 1/2	3 1/8	4
LOH3-127	80	127	112	110	2	3	5	4 1/8	4 1/8	4
LOH4-127	100	127	112	110	3	4	5	4 1/8	4 1/8	7
LOH6-127	150	127	112	172	5	6	5	4 1/8	6 3/4	11



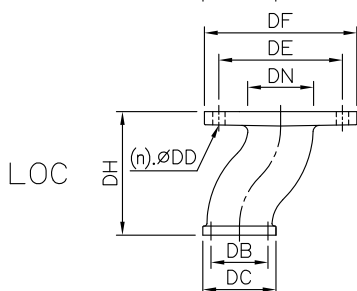
LOT	Dimensions-mm				kg	Dimensions-inch				lb	Thread Available		
	d2	DB	DC	DH		d2	DB	DC	DH		Weight		
LOT3-98	80	98	89	80	2	3	3 7/8	3 1/2	3 1/8	4	PF	PT	NPT
LOT3-127	80	127	112	85	2	3	5	4 1/8	3 3/8	4	PF	PT	NPT
LOT4-127	100	127	112	85	2	4	5	4 1/8	3 3/8	4	PF	PT	NPT
LOT6-127	150	127	112	140	4	6	5	4 1/8	5 1/2	9	PF	PT	NPT



LOF	Dimensions-mm							kg	Dimensions-inch							lb	(n)QTY
	DN	DB	DC	DD	DE	DF	DH		Weight	DN	DB	DC	DD	DE	DF		
LOF3-150-160*98	80	98	89	19	150~160	195	100	4	3	3 7/8	3 1/2	3/4	5 3/4~6 5/16	7 1/8	3 15/16	9	8
LOF3-150-160*127	80	127	112	19	150~160	195	110	7	3	5	4 7/16	3/4	5 3/4~6 5/16	7 1/8	4 5/16	15	8
LOF4-175-190*127	100	127	112	19	175~190	225	110	10	4	5	4 7/16	3/4	6 7/8~7 1/2	8 7/8	4 5/16	22	8
LOF6-240*127	150	127	112	23	240	280	140	14	6	5	4 7/16	7/8	9 1/16	11	5 1/2	31	8



LKF	Dimensions-mm							kg	Dimensions-inch							lb	(n)QTY	Thread Available	
	DN	DB	DC	DD	DE	DF	DH		Weight	DN	DB	DC	DD	DE	DF			DH	Weight
LKF3-150*98	80	98	89	15	150	185	100	8	3	3 7/8	3 1/2	9/16	5 3/4	7 5/16	3 15/16	18	8	PT	NPT
LKF3-150*127	80	127	112	15	150	185	110	8	3	5	4 7/16	9/16	5 3/4	7 5/16	4 5/16	15	8	PT	NPT
LKF4-175*127	100	127	112	15	175	210	110	10	4	5	4 7/16	9/16	6 7/8	8 1/4	4 5/16	22	8	PT	NPT
LKF6-240*127	150	127	112	23	240	280	140	20	6	5	4 7/16	7/8	9 1/16	11	5 1/2	44	8	PT	NPT



LOC	Dimensions-mm							kg	Dimensions-inch							lb	(n)QTY
	DN	DB	DC	DD	DE	DF	DH		Weight	DN	DB	DC	DD	DE	DF		
LOC3-150*98	80	98	89	15	150	185	150	5	3	3 7/8	3 1/2	9/16	5 3/4	7 5/16	5 3/4	11	8
LOC3-150*127	80	127	112	15	150	185	180	6	3	5	4 7/16	9/16	5 3/4	7 5/16	7 1/8	13	8