

TECHNICAL DATA

AG

Date 6/12/2012

Series 80AGH25.5

MOTOR SPECIFICATIONS

Motor Design	Air Filled
Applications	Waste Water
Insulation Class	Class F
Maximum Liquid Temp	0-40 C (32 - 104 F)
Frequency	60 HZ
RPM	3450

PUMP & MOTOR DATA

Impeller	Semi Open U Type
Solid	0.5
Discharge	3"
Motor	2 Pole
KW /Hp	5.5 / 7.5 HP
Phase	3
Cable	VCT or SJOW/SOW 33 Ft
Protection	Auto Cut

MATERIALS OF CONSTRUCTION

Motor Housing	FC200
Impeller	HICR
Waer Ring	HICR
Rotor	SUS420J2
Casing	SUS304
O-Rings	BUNA"N"
Bearing	Roller Bearings
Agitator	FCD-700
Mechanical Seal	Sillcon/Sillcon
	Carbon /Ceramic

DIMENSIONS, WEIGHT

Pump weight	141 LBS
Maximum Submergence	100 Ft
Optional	

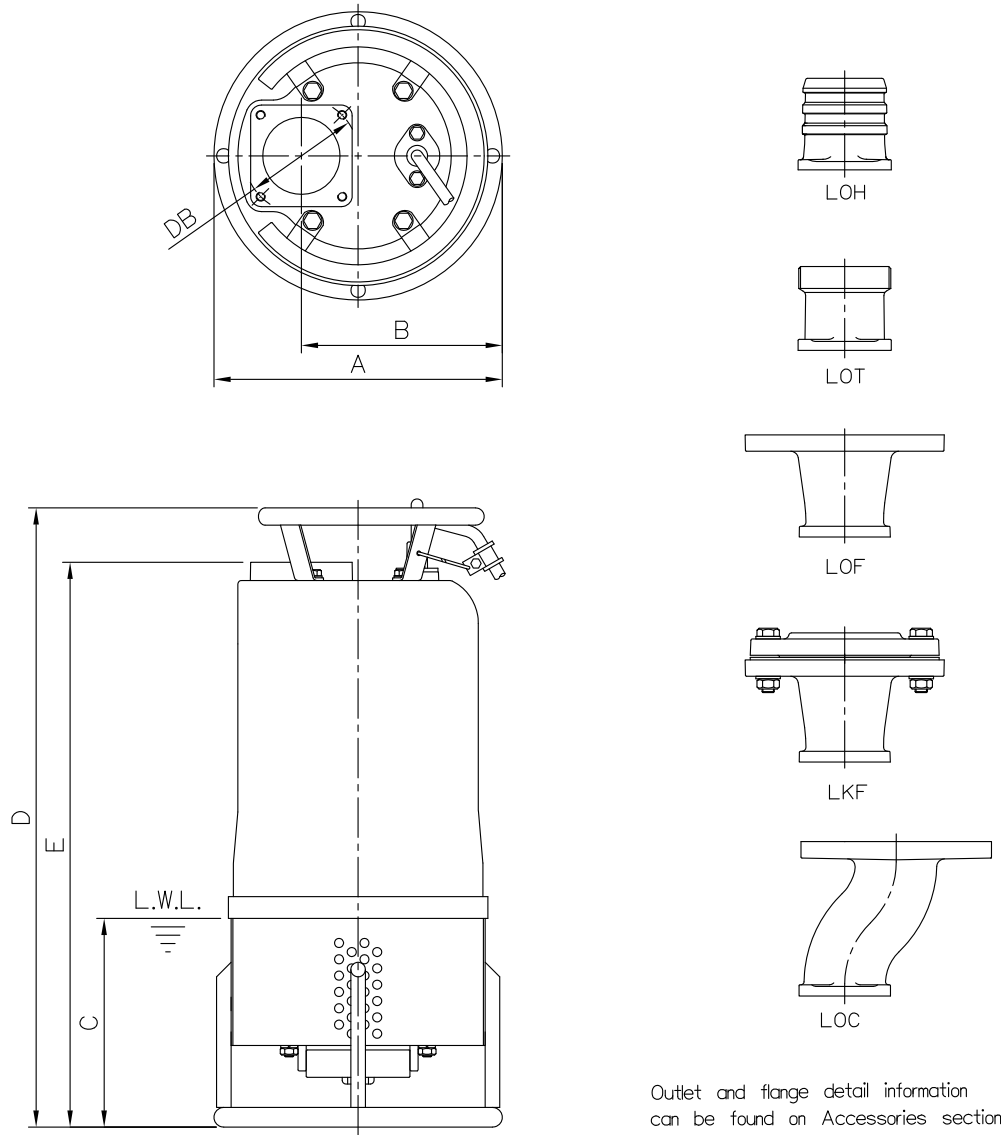
Model	80AGH25.5	1Ph	1Ph	3 Ph	3 Ph	3 Ph
		115	230	230	460	575
Amps				19.6	9.8	7.8

DIMENSIONS

No: S4AGN275030-00

MODEL: 80AGH25.5 & 100AGN25.5/27.5 & 150AGL25.5/27.5

30



Outlet and flange detail information can be found on Accessories section.

Dimensions-mm

Weight:kg

Model	A	B	C	D	E	DB	WT1 50Hz/60Hz	Optional Outlet Accessories				
								LOH	LOT	LOF	LKF	LOC
80AGH25.5	318	221	200	683	623	127	73/70	LOH3-127	LOT3-127	LOF3-150-160*127	LKF3-150*127	LOC3-150*127
100AGN25.5	318	221	200	683	623	127	76/72	LOH4-127	LOT4-127	LOF4-175-190*127	LKF4-175*127	-
100AGN27.5	318	221	200	683	623	127	81/80	LOH4-127	LOT4-127	LOF4-175-190*127	LKF4-175*127	-
150AGL25.5	318	221	200	683	623	127	79/NA	LOH6-127	LOT6-127	LOF6-240*127	LKF6-240*127	-
150AGL27.5	318	221	200	683	623	127	82	LOH6-127	LOT6-127	LOF6-240*127	LKF6-240*127	-

Dimensions-inch

Weight:lb

Model	A	B	C	D	E	DB	WT1 50Hz/60Hz	Optional Outlet Accessories				
								LOH	LOT	LOF	LKF	LOC
80AGH25.5	12½	8⅞	7⅞	26⅞	24½	5	161/154	LOH3-127	LOT3-127	LOF3-150-160*127	LKF3-150*127	LOC3-150*127
100AGN25.5	12½	8⅞	7⅞	26⅞	24½	5	168/159	LOH4-127	LOT4-127	LOF4-175-190*127	LKF4-175*127	-
100AGN27.5	12½	8⅞	7⅞	26⅞	24½	5	179/176	LOH4-127	LOT4-127	LOF4-175-190*127	LKF4-175*127	-
150AGL25.5	12½	8⅞	7⅞	26⅞	24½	5	174/NA	LOH6-127	LOT6-127	LOF6-240*127	LKF6-240*127	-
150AGL27.5	12½	8⅞	7⅞	26⅞	24½	5	181	LOH6-127	LOT6-127	LOF6-240*127	LKF6-240*127	-

L.W.L.:Lowest Running Water Level

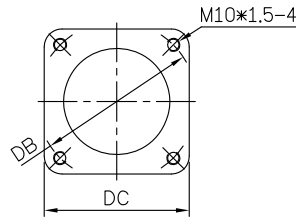
WT1:Pump Weight(Without Cable)

DIMENSIONS

No: SOAG000000-00

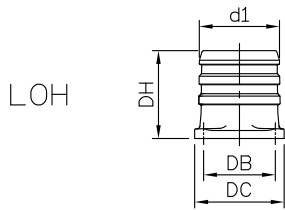
MODEL: Outlet (3"~6")

OUTLET CONNECTION

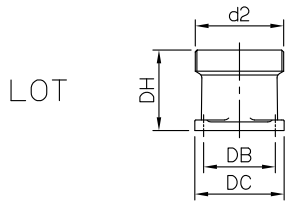


Model	mm		inch	
	DB	DC	DB	DC
1.5~3.7kW	98	89	3 ⁷ / ₈	3 ¹ / ₂
5.5~7.5kW	127	112	5	4 ⁷ / ₁₆

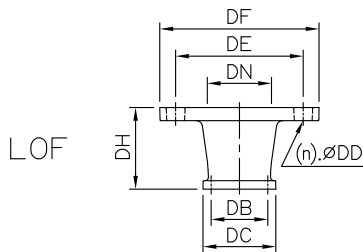
OPTIONAL OUTLET ACCESSORIES



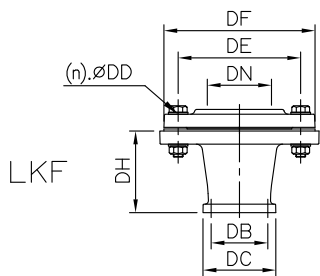
LOH	Dimensions-mm				kg	Dimensions-inch				lb
	d1	DB	DC	DH		d1	DB	DC	DH	
LOH3-98	80	98	89	100	2	3	3 ⁷ / ₈	3 ¹ / ₂	3 ¹⁵ / ₁₆	4
LOH3-127	80	127	112	110	2	3	5	4 ⁷ / ₁₆	4 ⁹ / ₁₆	4
LOH4-127	100	127	112	110	3	4	5	4 ⁷ / ₁₆	4 ⁹ / ₁₆	7
LOH6-127	150	127	112	172	5	6	5	4 ⁷ / ₁₆	6 ³ / ₄	11



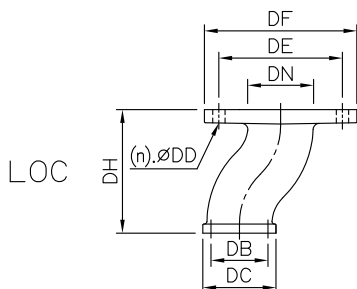
LOT	Dimensions-mm				kg	Dimensions-inch				lb	Thread Available		
	d2	DB	DC	DH		d2	DB	DC	DH		Weight		
LOT3-98	80	98	89	80	2	3	3 ⁷ / ₈	3 ¹ / ₂	3 ¹ / ₈	4	PF	PT	NPT
LOT3-127	80	127	112	85	2	3	5	4 ⁷ / ₁₆	3 ³ / ₈	4	PF	PT	NPT
LOT4-127	100	127	112	85	2	4	5	4 ⁷ / ₁₆	3 ³ / ₈	4	PF	PT	NPT
LOT6-127	150	127	112	140	4	6	5	4 ⁷ / ₁₆	5 ¹ / ₂	9	PF	PT	NPT



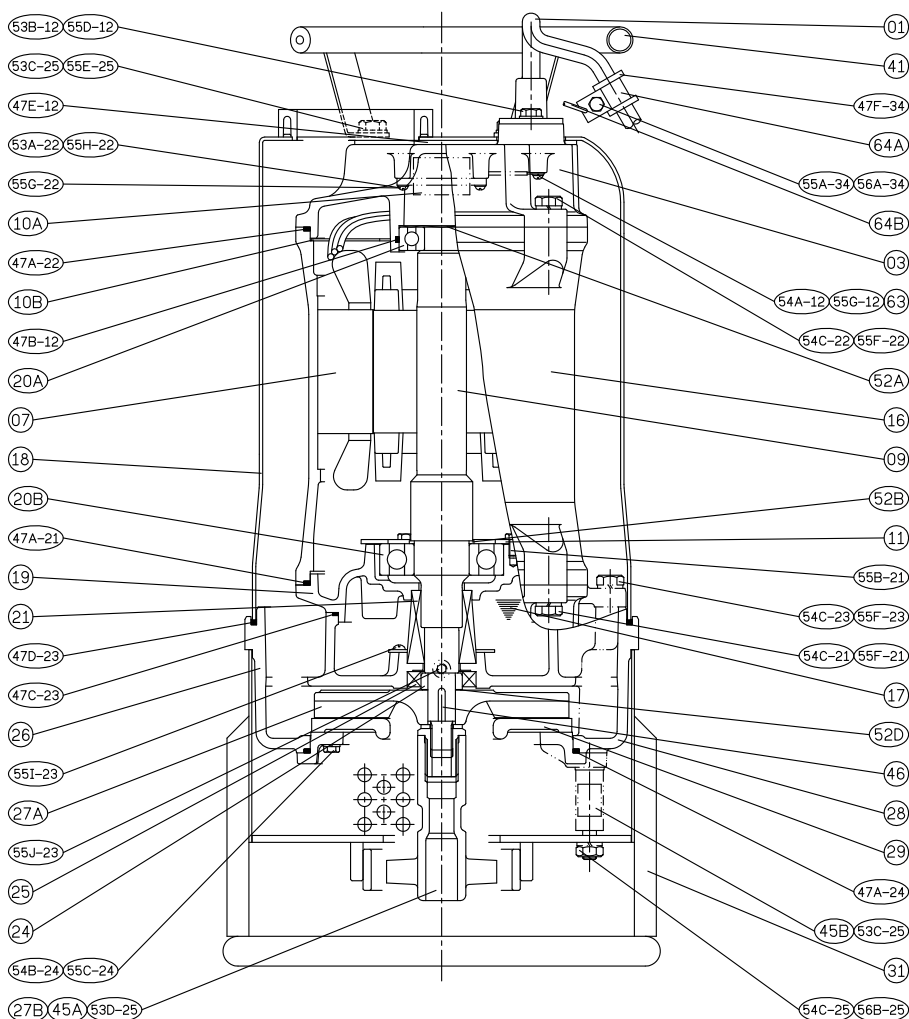
LOF	Dimensions-mm							kg	Dimensions-inch							lb	(n)QTY
	DN	DB	DC	DD	DE	DF	DH		Weight	DN	DB	DC	DD	DE	DF		
LOF3-150-160*98	80	98	89	19	150~160	195	100	4	3	3 ⁷ / ₈	3 ¹ / ₂	3 ¹ / ₄	5 ³ / ₄ ~6 ⁵ / ₁₆	7 ¹ / ₁₆	3 ¹⁵ / ₁₆	9	8
LOF3-150-160*127	80	127	112	19	150~160	195	110	7	3	5	4 ⁷ / ₁₆	3 ¹ / ₄	5 ³ / ₄ ~6 ⁵ / ₁₆	7 ¹ / ₁₆	4 ⁹ / ₁₆	15	8
LOF4-175-190*127	100	127	112	19	175~190	225	110	10	4	5	4 ⁷ / ₁₆	3 ¹ / ₄	6 ⁷ / ₈ ~7 ¹ / ₂	8 ⁷ / ₈	4 ⁹ / ₁₆	22	8
LOF6-240*127	150	127	112	23	240	280	140	14	6	5	4 ⁷ / ₁₆	7 ⁸ / ₁₆	9 ¹ / ₁₆	11	5 ¹ / ₂	31	8



LKF	Dimensions-mm							kg	Dimensions-inch							lb	(n)QTY	Thread Available	
	DN	DB	DC	DD	DE	DF	DH		Weight	DN	DB	DC	DD	DE	DF			DH	Weight
LKF3-150*98	80	98	89	15	150	185	100	8	3	3 ⁷ / ₈	3 ¹ / ₂	9 ¹ / ₁₆	5 ³ / ₄	7 ⁵ / ₁₆	3 ¹⁵ / ₁₆	18	8	PT	NPT
LKF3-150*127	80	127	112	15	150	185	110	8	3	5	4 ⁷ / ₁₆	9 ¹ / ₁₆	5 ³ / ₄	7 ⁵ / ₁₆	4 ⁹ / ₁₆	15	8	PT	NPT
LKF4-175*127	100	127	112	15	175	210	110	10	4	5	4 ⁷ / ₁₆	9 ¹ / ₁₆	6 ⁷ / ₈	8 ¹ / ₄	4 ⁹ / ₁₆	22	8	PT	NPT
LKF6-240*127	150	127	112	23	240	280	140	20	6	5	4 ⁷ / ₁₆	7 ⁸ / ₁₆	9 ¹ / ₁₆	11	5 ¹ / ₂	44	8	PT	NPT



LOC	Dimensions-mm							kg	Dimensions-inch							lb	(n)QTY
	DN	DB	DC	DD	DE	DF	DH		Weight	DN	DB	DC	DD	DE	DF		
LOC3-150*98	80	98	89	15	150	185	150	5	3	3 ⁷ / ₈	3 ¹ / ₂	9 ¹ / ₁₆	5 ³ / ₄	7 ⁵ / ₁₆	5 ³ / ₄	11	8
LOC3-150*127	80	127	112	15	150	185	180	6	3	5	4 ⁷ / ₁₆	9 ¹ / ₁₆	5 ³ / ₄	7 ⁵ / ₁₆	7 ¹ / ₁₆	13	8



No.	Part name	Material	QTY	Remark
01	Cable		1	
03	Upper cover	FC200	1	
07	Stator		1	
09	Shaft end	SUS304	1	
10A	Auto-cut		1	
10B	Auto-cut plate		1	
11	Bearing fixer	SPCC	1	
16	Motor frame	FC200	1	
17	Lubricant			
18	Outer cover	SUS304	1	
19	Bearing bracket	FC200	1	
20A	Bearing		1	
20B	Bearing		1	

No.	Part name	Material	QTY	Remark
21	M.seal	CA / CE & SIC / SIC	1	
24	Oil seal bush	SUS403	1	
25	Oil seal	NBR	1	
26	Casing	FC200	1	
27A	Impeller	HiCrFC	1	
27B	Agitator	FCD700	1	
28	Casing cover	FC200	1	
29	Wear plate	HiCrFC	1	
31	Strainer	SUS304	1	
41	Handle	SUS304	1	
46	Impeller key	SUS304	1	
47	Packing			



AG SLURRY DEWATERING PUMPS

SPARE PARTS

MODEL:80AGH25.5 60HZ3PH200-230V

No	Part Number	Part Name	Specifications	Material	Quantity	Unit
01	E01-0354BE0CA00-0	CABLE	HVCT 3.5mm2*4C*10M-ψ14、CA	HVCT	1	PC
03	B03-0180IC00000-0	UPPER COVER	I180-C-93	FC200	1	PC
07	E07-0H25542FD01-0	STATOR WINDING	180*100*90-2P5.5kW3ψ42F-6拔	C-60	1	PC
09	A09-0H0363DA002-0	ROTORSHAFT	2P-99.2*36*89-380-3ψD	SUS403+SUS304	1	PC
10B	E10-0C190000002-0	AUTO-CUT PLATE	190*80*1.5		1	PC
10A	E10-0Y314000002-0	AUTO-CUT	KA-314-HLXL-203		1	PC
11	E11-06308000000-0	BEARING FIXER	6308-104	SPCC	1	PC
16	B16-0180IC00000-0	MOTOR FRAME	I180-C-260	FC200	1	PC
17	I17-0D032000000-0	GREEN LUBRICANT	FOOD GRADE LUBRICANT VG32(Unit:CC)		850	CC
18	A18-0180UZQ0300-0	OUT COVER	180U-3、4、6"Q3ψ-348.5	SUS304	1	PC
19	B19-0180IC0H000-0	BEARING BRACKET	I180-C-90-57	FC200	1	PC
20A	F20-06305B00000-0	BEARING	6305ZC3		1	PC
20B	F20-06308B00000-0	BEARING	6308ZC3		1	PC
21	F21-0C025N50000-0	M. SEAL	ED560N-M25(30) SIC	SIC	1	PC
24	A24-0020A000001-0	OIL SEAL BUSH	A-20*30*12	SUS403	1	PC
25	F25-0S300501100-0	OIL SEAL	SC-30*50*11	304+NBR	1	PC
26	B26-0180IZ0H000-0	CASING	I180-3、4、6"-106	FC200	1	PC
27A	B27-032556QH001-0	IMPELLER	3"2P-5.5kW60Hz-Q(H)-163	HCR	1	PC
27B	B27-0Z2550TC000-0	AGITATOR	3"、4"、6"2P-(5.5kW / 7.5kW)-T(C)-80	FCD700	1	PC
28	B28-0180I300000-0	CASING COVER	I180-3"-25.5	FC200	1	PC
29	B29-0075P00H000-0	WEAR PLATE	P-75*189*15		1	PC
31	A31-0276G000000-0	STRAINER	G-276*230*ψ10	SUS304-2B	1	PC
41	A41-0C175000000-0	HANDLE	C-175-80	SUS304	1	PC
45A	A45-0A024035000-0	SCREW	A-M24-35	SUS304	1	PC
45B	A45-0CB10095000-0	BASE STAND	C-BM10-95	SUS403	4	PC
46	A46-0B050501900-0	IMPELLER KEY	B-5*5*19	SUS304	1	PC
47A-21	G47-0AA264N0000-0	ORING	A-A264(190.1*3.53)-N	NBR	1	PC
47A-22	G47-0AA264N0000-0	ORING	A-A264(190.1*3.53)-N	NBR	1	PC
47A-24	G47-0AA264N0000-0	ORING	A-A264(190.1*3.53)-N	NBR	1	PC
47B-12	G47-0AB062N0000-0	ORING	A-B062(62*3)-N	NBR	1	PC
47C-23	G47-0AB150N0000-0	ORING	A-B150(150*3)-N	NBR	1	PC
47D-23	G47-0B0268N0000-0	RECTANGULAR RING	B-0268(267.5*4)-N	NBR	1	PC
47E-12	G47-0DD175N0000-0	CAP GASKET	D-D-175-N	NBR	1	PC
47F-34	G47-0EC014N0000-0	CABLE COVER	E-C014(14*20)-N	NBR	1	PC
48-12	H48-0D200000001-0	CONNECTOR	CE-5		1	PC
48-22	H48-0D200000001-0	CONNECTOR	CE-5		3	PC
52A	H52-0A630500000-0	WAVE WASHER	6305		1	PC
52B	H52-0B040000000-0	BEARING WASHER	6308-40	SS400	1	PC
52D	H52-0D210340000-0	IMPELLER WASHER	D-21*34*0.2		2	PC
53A-22	H53-0A041000001-0	WASHER	A-M4-1 (4.3*9.9*1)		2	PC
53B-12	H53-0A081600000-0	WASHER	A-M8 (8.5*15.9*1.5)	SUS304	2	PC
53C-25	H53-0A102000000-0	WASHER	A-M10 (10.6*19.7*2)	SUS304	8	PC
53D-25	H53-0A163000000-0	WASHER	A-M16 (17.2*29.7*3)	SUS304	1	PC
54A-12	H54-0A040000000-0	SPRING WASHER	M4		1	PC
54B-24	H54-0A060000000-0	SPRING WASHER	M6	SUS304	4	PC
54C-21	H54-0A100000000-0	SPRING WASHER	M10	SUS304	4	PC
54C-22	H54-0A100000000-0	SPRING WASHER	M10	SUS304	4	PC
54C-23	H54-0A100000000-0	SPRING WASHER	M10	SUS304	4	PC
54C-25	H54-0A100000000-0	SPRING WASHER	M10	SUS304	4	PC
55A-34	H55-0A060120000-0	HEX HEAD CAP SCREWS(HEX BOLTS)	A-M6*12	SUS304	1	PC
55B-21	H55-0A060120001-0	HEX HEAD CAP SCREWS(HEX BOLTS)	A-M6*12		3	PC
55C-24	H55-0A060200000-0	HEX HEAD CAP SCREWS(HEX BOLTS)	A-M6*20	SUS304	4	PC
55D-12	H55-0A080200000-0	HEX HEAD CAP SCREWS(HEX BOLTS)	A-M8*20	SUS304	2	PC
55E-25	H55-0A100250000-0	HEX HEAD CAP SCREWS(HEX BOLTS)	A-M10*25	SUS304	4	PC
55F-21	H55-0A100300000-0	HEX HEAD CAP SCREWS(HEX BOLTS)	A-M10*30	SUS304	4	PC
55F-22	H55-0A100300000-0	HEX HEAD CAP SCREWS(HEX BOLTS)	A-M10*30	SUS304	4	PC

55F-23	H55-0A100300000-0	HEX HEAD CAP SCREWS(HEX BOLTS)	A-M10*30	SUS304	4 PC
55G-12	H55-0C040080001-0	SCREW	C-M4*8		1 PC
55H-22	H55-0C040120000-0	SCREW	C-M4*12		2 PC
55I-23	H55-0C050080000-0	SCREW	C-M5*8		4 PC
55J-23	H55-0E070100000-0	OIL PLUG	E-1/4*10	SUS304	1 PC
56A-34	H56-0A060000000-0	NUT	A-M6	SUS304	1 PC
56B-25	H56-0A100000000-0	NUT	A-M10	SUS304	4 PC
63	E63-0D20KA02000-0	EARTH WIRE	14AWG*200黃線-R(ψ4)+10脫	PVC	1 PC
64A	H64-0A021000001-0	CABLE CLIP	A21	SUS304-2B	1 PC
64B	H64-0B003000000-0	S RING	B3	SUS304	1 PC



AG SLURRY DEWATERING PUMPS

SPARE PARTS

MODEL:80AGH25.5 60HZ3PH230460V P230V

No	Part Number	Part Name	Specifications	Material	Quantity	Unit
01	E01-0354BE0CA00-0	CABLE	HVCT 3.5mm2*4C*10M-ψ14、CA	HVCT	1	PC
03	B03-0180IC00000-0	UPPER COVER	I180-C-93	FC200	1	PC
07	E07-0H25582FT01-0	STATOR WINDING	180*100*90-2P5.5kW3ψ82F-12拔 Y-2Y	C-60	1	PC
09	A09-0H0363DA002-0	ROTORSHAFT	2P-99.2*36*89-380-3ψD	SUS403+SUS304	1	PC
10B	E10-0C190000002-0	AUTO-CUT PLATE	190*80*1.5		1	PC
10A	E10-0Y314000002-0	AUTO-CUT	KA-314-HLXL-203		1	PC
11	E11-06308000000-0	BEARING FIXER	6308-104	SPCC	1	PC
16	B16-0180IC00000-0	MOTOR FRAME	I180-C-260	FC200	1	PC
17	I17-0D032000000-0	GREEN LUBRICANT	FOOD GRADE LUBRICANT VG32(Unit:CC)		850	CC
18	A18-0180UZOQ300-0	OUT COVER	180U-3、4、6"Q3ψ-348.5	SUS304	1	PC
19	B19-0180IC0H000-0	BEARING BRACKET	I180-C-90-57	FC200	1	PC
20A	F20-06305B00000-0	BEARING	6305ZZC3		1	PC
20B	F20-06308B00000-0	BEARING	6308ZZC3		1	PC
21	F21-0C025NS0000-0	M. SEAL	ED560N-M25(30) SIC	SIC	1	PC
24	A24-0020A000001-0	OIL SEAL BUSH	A-20*30*12	SUS403	1	PC
25	F25-05300501100-0	OIL SEAL	SC-30*50*11	304+NBR	1	PC
26	B26-0180IZOH000-0	CASING	I180-3、4、6"-106	FC200	1	PC
27A	B27-032556QH001-0	IMPELLER	3"2P-5.5kW60Hz-Q(H)-163	HCR	1	PC
27B	B27-0Z2550TC000-0	AGITATOR	3"、4"、6"2P-(5.5kW / 7.5kW)-T(C)-80	FCD700	1	PC
28	B28-0180I300000-0	CASING COVER	I180-3"-25.5	FC200	1	PC
29	B29-0075P00H000-0	WEAR PLATE	P-75*189*15		1	PC
31	A31-0276G000000-0	STRAINER	G-276*230*ψ10	SUS304-2B	1	PC
41	A41-0C175000000-0	HANDLE	C-175-80	SUS304	1	PC
45A	A45-0A024035000-0	SCREW	A-M24-35	SUS304	1	PC
45B	A45-0CB10095000-0	BASE STAND	C-BM10-95	SUS403	4	PC
46	A46-0B050501900-0	IMPELLER KEY	B-5*5*19	SUS304	1	PC
47A-21	G47-0AA264N0000-0	ORING	A-A264(190.1*3.53)-N	NBR	1	PC
47A-22	G47-0AA264N0000-0	ORING	A-A264(190.1*3.53)-N	NBR	1	PC
47A-24	G47-0AA264N0000-0	ORING	A-A264(190.1*3.53)-N	NBR	1	PC
47B-12	G47-0AB062N0000-0	ORING	A-B062(62*3)-N	NBR	1	PC
47C-23	G47-0AB150N0000-0	ORING	A-B150(150*3)-N	NBR	1	PC
47D-23	G47-0B0268N0000-0	RECTANGULAR RING	B-0268(267.5*4)-N	NBR	1	PC
47E-12	G47-0DD175N0000-0	CAP GASKET	D-D-175-N	NBR	1	PC
47F-34	G47-0EC014N0000-0	CABLE COVER	E-C014(14*20)-N	NBR	1	PC
48-12	H48-0D200000001-0	CONNECTOR	CE-5		1	PC
48-22	H48-0D200000001-0	CONNECTOR	CE-5		3	PC
52A	H52-0A630500000-0	WAVE WASHER	6305		1	PC
52B	H52-0B040000000-0	BEARING WASHER	6308-40	SS400	1	PC
52D	H52-0D210340000-0	IMPELLER WASHER	D-21*34*0.2		2	PC
53A-22	H53-0A041000001-0	WASHER	A-M4-1 (4.3*9.9*1)		2	PC
53B-12	H53-0A081600000-0	WASHER	A-M8 (8.5*15.9*1.5)	SUS304	2	PC
53C-25	H53-0A102000000-0	WASHER	A-M10 (10.6*19.7*2)	SUS304	8	PC
53D-25	H53-0A163000000-0	WASHER	A-M16 (17.2*29.7*3)	SUS304	1	PC
54A-12	H54-0A040000000-0	SPRING WASHER	M4		1	PC
54B-24	H54-0A060000000-0	SPRING WASHER	M6	SUS304	4	PC
54C-21	H54-0A100000000-0	SPRING WASHER	M10	SUS304	4	PC
54C-22	H54-0A100000000-0	SPRING WASHER	M10	SUS304	4	PC
54C-23	H54-0A100000000-0	SPRING WASHER	M10	SUS304	4	PC
54C-25	H54-0A100000000-0	SPRING WASHER	M10	SUS304	4	PC
55A-34	H55-0A060120000-0	HEX HEAD CAP SCREWS(HEX BOLTS)	A-M6*12	SUS304	1	PC
55B-21	H55-0A060120001-0	HEX HEAD CAP SCREWS(HEX BOLTS)	A-M6*12		3	PC
55C-24	H55-0A060200000-0	HEX HEAD CAP SCREWS(HEX BOLTS)	A-M6*20	SUS304	4	PC
55D-12	H55-0A080200000-0	HEX HEAD CAP SCREWS(HEX BOLTS)	A-M8*20	SUS304	2	PC
55E-25	H55-0A100250000-0	HEX HEAD CAP SCREWS(HEX BOLTS)	A-M10*25	SUS304	4	PC
55F-21	H55-0A100300000-0	HEX HEAD CAP SCREWS(HEX BOLTS)	A-M10*30	SUS304	4	PC
55F-22	H55-0A100300000-0	HEX HEAD CAP SCREWS(HEX BOLTS)	A-M10*30	SUS304	4	PC

55F-23	H55-0A100300000-0	HEX HEAD CAP SCREWS(HEX BOLTS)	A-M10*30	SUS304	4 PC
55G-12	H55-0C040080001-0	SCREW	C-M4*8		1 PC
55H-12	H55-0C040120000-0	SCREW	C-M4*12		2 PC
55I-23	H55-0C050080000-0	SCREW	C-M5*8		4 PC
55J-23	H55-0E070100000-0	OIL PLUG	E-1/4*10	SUS304	1 PC
56A-34	H56-0A060000000-0	NUT	A-M6	SUS304	1 PC
56B-25	H56-0A100000000-0	NUT	A-M10	SUS304	4 PC
63	E63-0D20KA02000-0	EARTH WIRE	14AWG*200黃線-R(ψ4)+10脫	PVC	1 PC
64A	H64-0A021000001-0	CABLE CLIP	A21	SUS304-2B	1 PC
64B	H64-0B003000000-0	S RING	B3	SUS304	1 PC

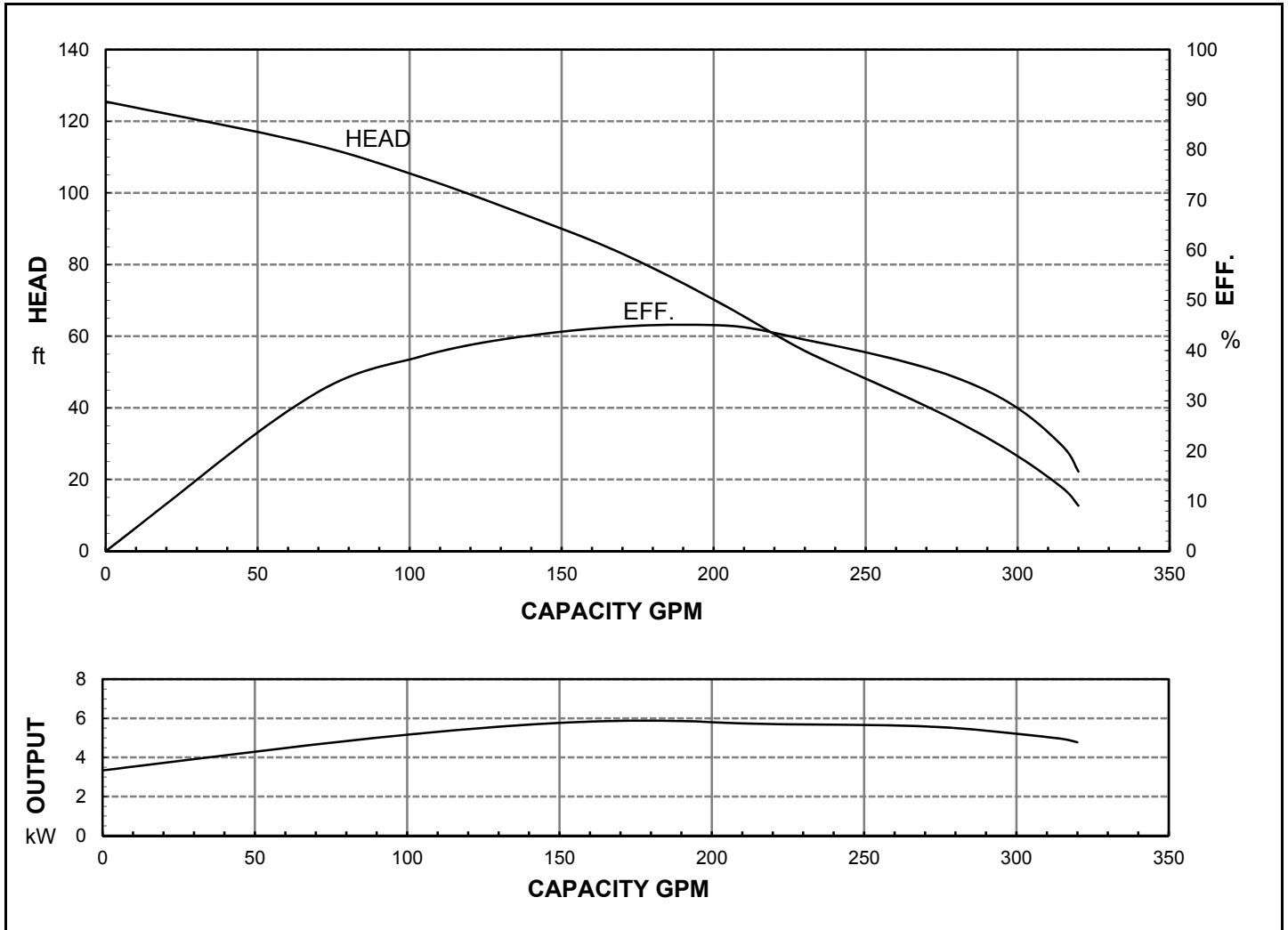


HCP PUMP

FILE NO PC-FT-E6-80AGH25.5

PUMP PERFORMANCE CURVES

MODEL	80AGH25.5						DATE:	
	STANDARD SPECIFICATION						REFERENCE SPECIFICATION	
FREQUENCY	60 Hz							
DISCHARGE	3 inch		/		80 mm			
OUTPUT	7.5 HP		/		5.5 kW		HP	kW
HEAD	95 ft							
CAPACITY	132 GPM							
PHASE/VOLTAGE	3 Ø	220 V	230 V	440 V	460 V	575 V	Ø	V
RATED CURRENT		20.0 A	19.6 A	10.0 A	9.8 A	7.8 A		A
POLE / rpm	2 P		/		3450 rpm			
START METHOD	DIRECT							
INSULATION CLASS	F							
REMARK								



HCP PUMP MANUFACTURER CO.,LTD.