

HCP
PUMPS
America

2022

General Catalog

professionalism • innovation • service • commitment



2022

General Catalog

Pumps

GF Series	01	IC Series	10
AF Series	02	HDG Series	11
AFC Series	03	L Series	12
F Series	04	LA Series	13
FN Series	05	GDS/GDR Series	14
Suction Lift Series	06	A Series	15
DBP Series	07	AN Series	16
SA/SF Series	08	AL Series	17
HD/BD Series	09		

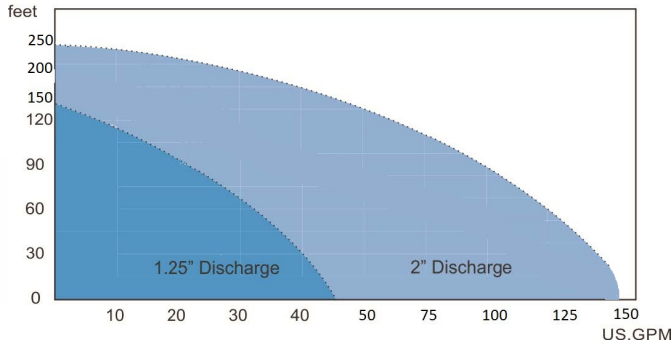
Other

Control Panels • Basins	18
GRS • Accessories	19

Product Nomenclature

F	2	1	U	F	2	1		
Type	Discharge	Hp	Style	Float	230 V	1Ø		
80	AF	U	2	3.7	L	A	4	3
Size	Series	Style	Pole	kW	Large Solid	—	460 V	3Ø

GF Series Curves



GF Series Features

- Triple seal design
- Cable entry with anti-wicking epoxy and compression grommet
- Thermal Auto-Cut 3Hp and below
- Moisture and Thermal Overload protection on 5Hp and above (includes 50GF22.2)
- 50 ft cable standard on 5Hp and above
- Single and three-phase motors available
- Cast iron motor housing
- B class motor standard 2Hp and below
- H class motor standard 5Hp and above
- Optional attached float on select models
- Internal capacitors on select models
- External capacitors on select models
- Stainless steel cutting assembly 50-60 Rockwell Hardened
- Optional horizontal discharge on 32GF Series models

	Discharge	1.25" • 2"
MAX	Liquid Temp. Applications Submersion	32–180° F Wastewater 100 ft
TYPE	Frequency Motor Insulation Protection Protector Bearing Mechanical Seal Lip Seal Impeller	60 Hz 2P • Class B (≤3Hp) • Class H (≥5Hp) IP68 Auto-Cut • MTS & MS Ball Type, Double Lower Ball Bearing Double Mechanical Seals Silicon Vortex
MATERIAL	Radial Cutter Cutter Ring Main Shaft Mechanical Seal Casing Impeller Cable Optional	SUS440C SUS440C SUS420J2 • SUS403 Upper: Carbon/Ceramic Lower: Silicon/Silicon ASTM-48, Class 30 ASTM-48, Class 30 VCT or H07RN-7 or SJOW/SOW Float Switch (≤3Hp) • DN40 Casing 2" Horizontal/Vertical Discharge • Seal leak and Overtemp Standard >5hp

MAX					
Model	HP	Dis.	Ø	Head	Flow
32GF21.0	1	1.25"	1/3	67	32
32GF21.5	2	1.25"	1/3	85	44
32GF22.2	3	1.25"	1/3	109	45
32GF22.2H	3	1.25"	1/3	131	35
32GFR22.2	3	1.25"	1	109	45
32GFR22.2H	3	1.25"	1	131	35
*50GF22.2	3	2"	1/3	81	85
*50GF23.7	5	2"	1/3	120	86
*50GF24.5	6	2"	1/3	145	89
50GF25.5	7.5	2"	3	99	140
50GF25.5H	7.5	2"	3	127	92
50GF27.5	10	2"	3	149	140
50GF27.5H	10	2"	3	179	95
50GF211	15	2"	3	204	144
50GF211H	15	2"	3	249	95

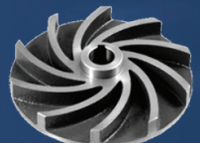
* Requires external capacitors



vortex impeller



radial cutter • cutter ring



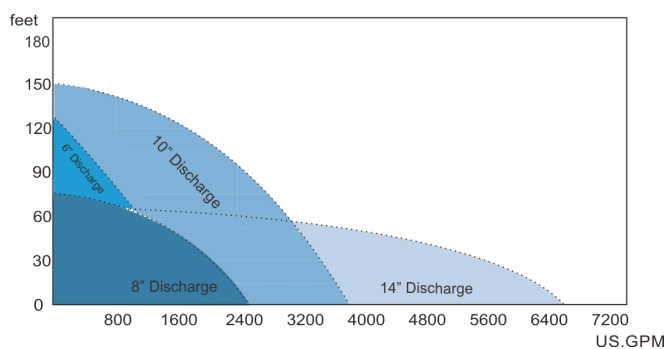
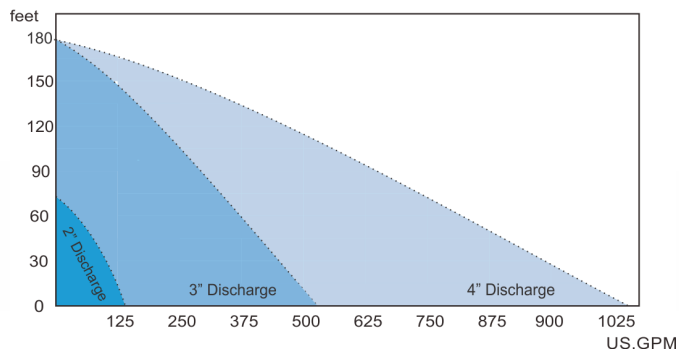
vortex impeller

AF Series

Submersible Sewage/Wastewater Pumps

02

AF Series Curves



AF Series Features

- Triple seal design
- Cable entry with anti-wicking epoxy and compression grommet
- Thermal Auto-Cut 3Hp and below
- Moisture and Thermal Overload protection on 5Hp and above (includes 80/100AFE42.2)
- 50 ft Cables on 5Hp and above
- Single and three-phase motors available
- 2, 4, and 6 Pole motors available

- Cast Iron motor housing
- B class motors available 2Hp and below
- H class motors available 5Hp and above
- Optional attached float on select models
- Internal capacitors on select models
- External capacitors on select models
- Anti air-locking device on select models

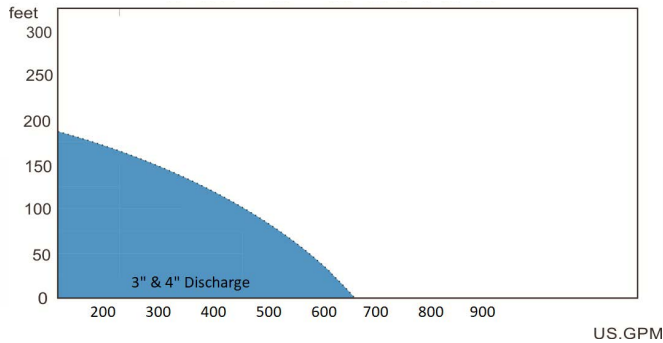
	Discharge	2" • 3" • 4" • 6" • 8" • 10" • 14"
MAX	Liquid Temp. Applications Submersion	32–180° F Municipal & Industrial Wastewater 100 ft
TYPE	Frequency Motor Insulation Protection Protector Bearing Mechanical Seal Lip Seal Impeller	60 Hz 2P–6P • Air-Filled Motor Class B (≤3Hp) • Class H (≥5Hp) IP68 Minature Thermal Sensor (MTS) • Overtemp Moisture Sensor (MS) • Auto-Cut ≤3Hp Ball Type Double Mechanical Seals Silicon Enclosed-channel(E) • Semi-Open(P) • Vortex(U)
MATERIAL	Upper Cover Motor Frame Main Shaft Mechanical & Lip Seals Casing Impeller Wear Ring Cable Optional	ATSM-48, Class 30 ATSM-48, Class 30 SUS420J2 • SUS403 • SUS410 Upper: Carbon/Ceramic Lower: Silicon/Silicon ASTM-48, Class 30 ASTM-48, Class 30 Brass SOW 30 ft & 50 ft • 10 Hp: VCT/SJOW/SOW • 10–30Hp: H07RN-F Seal Leak & Thermal Protection (Standard for ≥5Hp)

MAX						
Model	HP	Dis.	Ø	Head	Flow	Solids
50AFU	0.5-3	2"	1/3	66	138	1.5-2"
80AFP	2-15	3"	1/3	178	518	1.25-2"
80AFU	2-15	3"	1/3	137	460	2-3"
80AFE	3-5	3"	1/3	58	400	3"
100AFE	1.5-40	4"	3	178	1190	3"
100AFU	7.5-10	4"	3	64	656	4"
AF-6"	10-20	6"	3	122	1570	3"
150AFE	7.5-40	6"	3	125	2300	3"
AF-8"	15-20	8"	3	75	2450	3"
AF-10"	30-75	10"	3	150	3700	3"
*AF-14"	30-60	14"	3	66	7850	4.75"

*Optional 16" discharge



AFC Series Curves



AFC Series Features

- Triple seal design
- Cable entry with anti-wicking epoxy and compression grommet
- Thermal Auto-Cut 3Hp and below
- Moisture and Thermal Overload Protection on 5Hp and above
- 50 ft Cables on 5Hp and above
- Single and three-phase motors available
- 2 and 4 Pole motors available
- Cast Iron Motor Housing
- Air-filled motors
- B class 2Hp and below
- H class 5Hp and above
- Optional attached float on select models
- Internal capacitors on select models
- External capacitors on select models
- Anti air-locking device on select models
- Tungsten Carbide cutting edge on impeller

	Discharge	3"
MAX	Liquid Temp. Applications Submersion	32–180° F Sewage 100 ft
TYPE	Frequency Motor Insulation Protection Protector Bearing Mechanical Seal Lip Seal Impeller	60 Hz 2 & 4P • Air-Filled Motor Class B (≥5Hp: Class H) IP68 Auto-cut (≥5Hp: MTS & MS) Ball Type Double Mechanical Seals Silicon Semi-Open + Tungsten Cutting Tips
MATERIAL	Upper Cover Motor Frame Main Shaft Mechanical Seal Casing Impeller Casing Cover Footing Cable	ASTM-48, Class 30 ASTM-48, Class 30 SUS403 Upper: Carbon/Ceramic Lower: Silicon/Silicon ASTM-48, Class 30 ASTM-48, Class 30 + Tungsten ASTM-48, Class 30 + Heat FCD450 VCT or H07RN-F or SJOW/SOW

— MAX —						
Model	HP	Dis.	Ø	Head	Flow	Solids
80AFC21.5	2	3"	1/3	52	244	2.5"
80AFC22.2	3	3"	1/3	65	280	2.5"
*80AFC23.7A	5	3"	1/3	94	342	2.5"
80AFC25.5	7.5	3"	3	115	382	2.5"
80AFC27.5	10	3"	3	140	440	2.5"
80AFC211	15	3"	3	180	490	2.5"
80AFC42.2	3	3"	1/3	48	290	2.5"
80AFC43.7	5	3"	1/3	61	395	2.5"
100AFC45.5	7.5	4"	3	73	530	2.5"
100AFC47.5	10	4"	3	79	660	2.5"

* Requires external capacitors



Tungsten Carbide Impeller



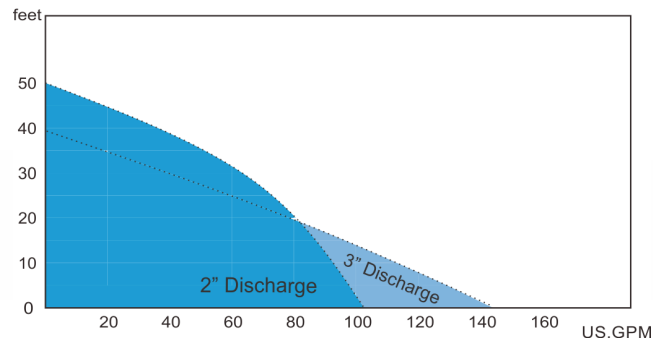
Cutter Casing Cover

F Series

Submersible Effluent Pumps

04

F Series Curves

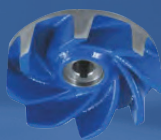


	Discharge	2" • 3"
MAX	Liquid Temp. Applications Submersion	32–104° F Effluent/Drainage 100 ft
TYPE	Frequency Motor Insulation Protection Protector Bearing Mechanical Seal Lip Seal Impeller	60 Hz 2P • Air-Filled Motor (F-05A: Oil motor) Class B IP68 Auto-Cut (0.5Hp 1Ø: Thermal) Ball Type Double Mechanical Seals (F-05A: Single Seal) Silicon Vortex(U), Semi-Open(P)
MATERIAL	Upper Cover Motor Frame Main Shaft Mechanical Seal Casing Impeller Cable	ASTM-48, Class 30 SUS304 SUS410 Upper: Carbon/Ceramic Lower: Silicon/Silicon ASTM-48, Class 30 ASTM-48, Class 30 (F-05A: PA) VCT or H07RN-7 or SJOW/SOW

F Series Features

- Triple seal design
- Cable entry with anti-wicking epoxy and compression grommet
- Thermal Auto-Cut
- Single and three-phase motors available
- Stainless steel motor housing
- Air filled-motors (F-05A Oil-Filled)
- Optional attached float
- Internal Capacitors

MAX						
Model	HP	Dis.	Ø	Head	Flow	Solids
F-05A	0.5	2"	1	40	58	0.5"
F-05U	0.5	2"	1/3	31	74	1.5"
F-05UL	0.5	2"	1/3	33	95	2"
F-21U	1	2"	1/3	45	93	1.5"
F-21UL	1	2"	1/3	33	95	2"
F-21P	1	2"	1/3	50	103	1"
F-31U	1	3"	1/3	38	143	1.25"



U-Type Impeller

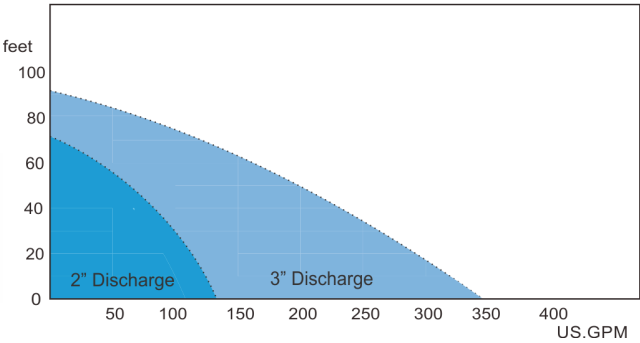


P-Type Impeller



Guide Rail System for F Series

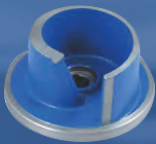
FN Series Curves



	Discharge	2" • 3"
MAX	Liquid Temp. Applications Submersion	32–104° F Wastewater/Effluent 100 ft
TYPE	Frequency Motor Insulation Protection Protector Bearing Mechanical Seal Lip Seal Impeller	60 Hz 2P • Air-Filled Motor Class B (5Hp: Class H) IP68 Auto-Cut Ball Type Double Mechanical Seals Silicon Semi-Open(P), Vortex(U)
MATERIAL	Upper Cover Motor Frame Main Shaft Mechanical Seal Casing Impeller Cable	ASTM-48, Class 30 SUS304 SUS403 Upper: Carbon/Ceramic Lower: Silicon/Silicon ASTM-48, Class 30 ASTM-48, Class 30 VCT or H07RN-7 or SJOW/SOW



U-Type Impeller



P-Type Impeller

FN Series Features

- Triple seal design
- Cable entry with Anti-wicking epoxy and compression grommet
- Thermal Auto-Cut
- Single and three-phase motors available
- Stainless steel motor housing
- Air-filled motors
- Optional attached float
- Internal capacitors
- Anti air-locking device on select models

MAX						
Model	HP	Dis.	Ø	Head	Flow	Solids
FN-22U	2	2"	1/3	67	112	1.5"
FN-22UL	2	2"	1/3	53	122	2"
FN-23U	3	2"	1/3	81	125	1.5"
FN-23UL	3	2"	1/3	63	138	2"
FN-32U	2	3"	1/3	51	174	2"
FN-32UL	2	3"	1/3	32	192	3"
FN-32P	2	3"	1/3	51	250	1.5"
FN-33U	3	3"	1/3	64	208	2"
FN-33UL	3	3"	1/3	31	228	3"
FN-33P	3	3"	1/3	68	292	1.5"
FN-35U	5	3"	3	85	262	2"
FN-35UL	5	3"	3	48	285	3"
FN-35P	5	3"	3	90	345	1.5"



Suction Lift Series

Self-Priming Pumps

06



Series Features

- Capable of priming without flap valve
- Non-clog design capable of handling large solids
- Lubrication of mechanical seal cavity makes performance more reliable
- Multiple rotary speeds, reliable operation, easy maintenance, and long product life
- Equipped with pressure relief valve
- Removable cover plate with easy grip handle
- Removable rotating assembly
- Replacable wear plate
- Multiple skid configurations available

Discharge		2" • 3" • 4" • 6" • 8" • 10"
Conditions	Density of Medium	1.0–1.38*103Kg/m³
	PH	Within 5–9
	Solid Max Diameter	>3"
	Max Suction Lift	25 ft
	Volume Ratio of Solids	2%
TYPE	Impeller Diameter	6–18"
	Rotary Speed	P Series: 550 RPM–2150 RPM H Series: 850 RPM–3600 RPM
	Flow Rates	P Series: 20 GPM–5500 GPM H Series: 35 GPM–1325 GPM
	Head	P Series: 15–140 ft H Series: 25–192 ft
	Horsepower	P Series: 1Hp–100Hp H Series: 1.5Hp–75Hp
	Solid Passing	P Series: 0.75–3" H Series: 1.25"
	Materials	P Series: Cast Iron, Ductile Iron, Stainless Steel, Cast Steel, Aluminium, Bronze H Series: Cast Iron, ADI, CD4MCU, 316 Stainless Steel, Alloy 20, C276

MAX					
Model	HP	Dis.	Ø	Head	Flow
H-3	1.5-25	3"	3	210	375
H-4	3-40	4"	3	195	650
H-6	5-75	6"	3	190	1350
P-2	1-10	2"	3	128	210
P-3	1-20	3"	3	116	465
P-4	1-30	4"	3	117	730
P-6	2-40	6"	3	110	530
P-8	7.5-75	8"	3	112	2650
P-10	10-100	10"	3	130	3450



Rotating Assembly



Semi-open impeller



Flap valve assembly

Series Highlights

- **Mobility** Our trailer-mounted units are made to go where you go.
- **Versatility** We focus on modular design and use across multiple applications.
- **Durability** All configurations have been tested and verified in the toughest working conditions.
- **Efficiency** Our pumps are designed to work in any environment while reducing fuel consumption.
- **Simplicity** All parts and consumables are easily accessible for service and repair.

Specifications

- **Discharge** 4, 6, 8, 10, 12"
- **Horsepower** 30–225
- **Max Head** 350 ft
- **Max Flow** 4500 GPM

Features

- High Capacity Diaphragm Pump provides automatic and fast priming
- Oil-Bathed Mechanical Seals allows dry-running capability without damaging the shaft seals
- Tier 4 Final Engine comes standard with all DBP units and meets the latest engine emission standards
- Lifting Beam comes standard with all DBP units
- Different Skid Styles configured to meet your needs
- High Efficiency Hydraulic End ensures lower fuel consumption
- Hinged Pump Housing allows for easy servicing of pump



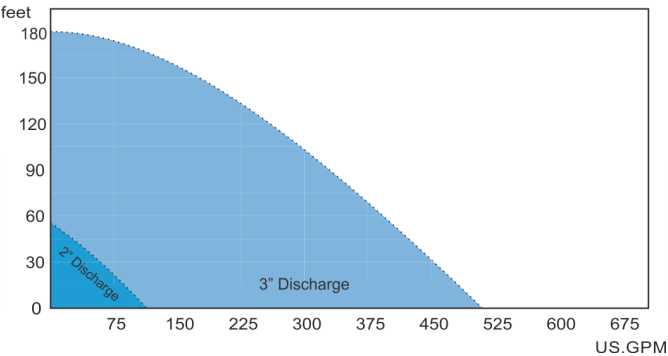
Various configurations of trailer-mounted, skid, and permanent-mounted DBP units.

SA/SF Series

Submersible Stainless Steel Pumps

08

SA/SF Series Curves



SA/SF Series Features

- Triple seal design
- Cable entry with anti-wicking epoxy and compression grommet
- Thermal Auto-Cut 3hp and below
- Moisture and thermal overload protection on 5Hp and above
- 50 ft cables standard on 5Hp and above
- Single and three-phase motors available
- Complete 316 or 304 stainless steel construction
- Air-filled motors
- B Class motor option available on 2Hp and below
- H Class Motor motor option available on 5Hp and above
- Optional attached float on select models
- Internal capacitors on select models
- Anti air-locking device on select models
- Standard with Viton O-Rings
- SA Series has screened inlet for smaller solids passage.

	Discharge	2" • 3"
MAX	Liquid Temp. Applications Submersion	32–180° F Corrosive fluids 100 ft
TYPE	Frequency Motor Insulation Protection Protector Bearing Mechanical Seal Lip Seal Impeller	60 Hz 2P • Air-Filled Motor Class B (≤3Hp) • Class H (≥5Hp) IP68 Auto-cut • MTS & MS (≥5Hp) Ball Type Double Mechanical Seals Silicon Semi-Open(P), Vortex(U)
MATERIAL	Upper Cover Motor Frame Main Shaft Mechanical Seal O-Ring Casing Impeller Casing Cover Cable	SCS13 (0.5 Hp) • SCS140 SUS316 SUS316 Upper: Carbon/Ceramic Lower: Silicon/Silicon Viton SCS13 (0.5 Hp) • SCS140 SCS14 SCS13 (0.5 Hp) • SCS140 VCT or H07RN-F or SJOW/SOW

MAX					
Model	HP	Dis.	Ø	Head	Flow
50SA	0.5-1	2"	1/3	53	96
80SA	2-15	3"	1/3	182	512
50SFU	0.5-1	2"	1/3	49	97
80SFU/P	2-15	3"	1/3	180	515



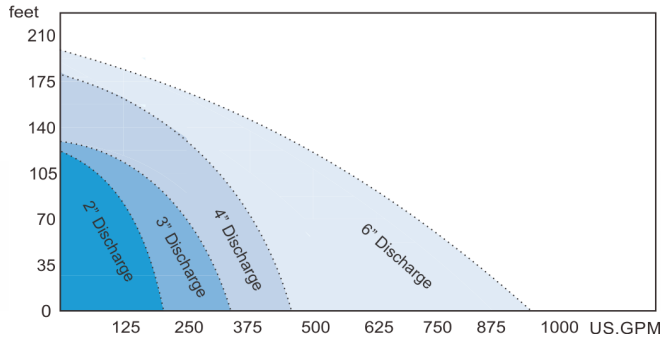
stainless steel elbows

HD/BD Series

Submersible Dewatering Pumps

09

HD/BD Series Curves

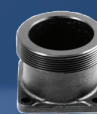


HD Series Features

- Triple seal design
- Cable entry with anti-wicking epoxy and compression grommet
- Thermal Auto-Cut 3Hp and below
- 30 ft Cables on 5Hp and above
- Single and three-phase motors available
- Stainless steel outer jacket
- Cast Iron Motor Housing
- Air-filled motors
- B class motor option available on 2Hp and below
- H class motor option available on 3Hp and above
- Internal Capacitors on select models
- Multiple discharge options
- High Chrome alloy steel impeller and wear ring with 55-60 Rockwell Hardened

	Discharge	2" • 3" • 4" • 6"
MAX	Liquid Temp. Applications Submersion	32–180° F Dewatering 100 ft
TYPE	Frequency Motor Insulation Protection Protector Bearing Mechanical Seal Impeller Lip Seal	60 Hz 2P • Air-Filled Motor Class B (≤3Hp) • Class H (≥5Hp) IP68 Auto-cut Ball Type Double Mechanical Seals Semi-Open • Enclosed Channel Silicon
MATERIAL	Upper Cover Motor Frame Main Shaft Mechanical Seal Casing Impeller Wear Ring/Plate Cable	ASTM-48, Class 30 SUS304 • ASTM-48, Class 30 (≥5Hp) SUS403 • SUS2012 (≥5Hp) Upper: Carbon/Ceramic Lower: Silicon/Silicon ASTM-48, Class 30 HiCrFC HiCrFC VCT or H07RN-F or SJOW/SOW

MAX					
Model	HP	Dis.	Ø	Head	Flow
50HD21.1	1.5	2"	1/3	65	113
50HD21.5	2	2"	1/3	76	135
50HD22.2	3	2"	1/3	93	158
50HD23.7	5	2"	3	122	198
80HD21.5	2	3"	1/3	64	228
80HD22.2	3	3"	1/3	75	265
80HD23.7	5	3"	3	105	270
80HD25.5	7.5	3"	3	132	332
100HD23.7	5	4"	3	82	405
100HD25.5	7.5	4"	3	105	505
100HD27.5	10	4"	3	135	492
100HD211	15	4"	3	179	422
100BD222	30	4"	3	242	500
150HD215	20	6"	3	190	608
150BD222	30	6"	3	170	950

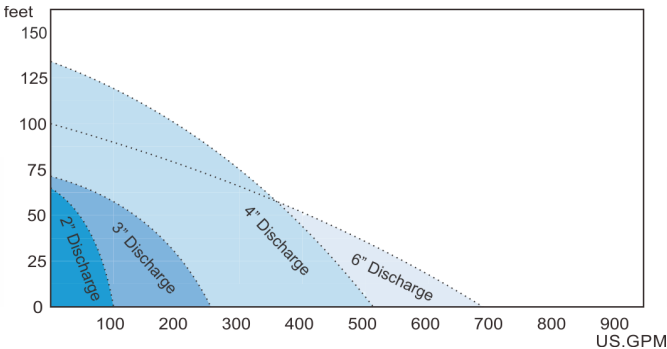


IC Series

Submersible Dewatering Pumps

10

IC Series Curves



IC Series Features

- Triple seal design
- Cable entry with anti-wicking epoxy and compression grommet
- Thermal Auto-Cut 3Hp and below
- 30 ft cables on 5Hp and above
- Single and three-phase motors available
- Stainless steel outer jacket
- Cast iron motor housing
- Air-filled motors
- B class motor option available on 2Hp and below
- H class motor option available on 5Hp and above
- Internal capacitors on select models
- Multiple discharge options

	Discharge	2" • 3" • 4" • 6"
MAX	Liquid Temp. Applications Submersion	32–180° F Irrigation & Dewatering 100 ft
TYPE	Frequency Motor Insulation Protection Protector Bearing Mechanical Seal Lip Seal Impeller	60 Hz 2P • Dry Motor Class B • Class H (≥5Hp) IP68 Auto-cut Ball Type Double Mechanical Seals Silicon Enclosed Channel, Semi-Open
MATERIAL	Upper Cover Motor Frame Mechanical Seal Shaft End Impeller Casing Cable	ASTM-48, Class 30 SUS403 • ASTM-48, Class 30 (≥2Hp) Upper: Carbon/Ceramic Lower: Silicon/Silicon SUS403 • SUS304 (≥5Hp) Chrome Steel • Bronze (IC-215) ASTM-48, Class 30 VCT or H07RN-F or SJOW/SOW

MAX					
Model	HP	Dis.	Ø	Head	Flow
*IC-215	1.5	2"	1/3	64	100
*IC-32B	2	3"	1/3	61	227
*IC-33B	3	3"	1/3	70	255
*IC-43B	3	4"	3	61	355
*IC-45B	5	4"	3	81	420
*IC-46B	6	4"	3	84	470
IC-48	7.5	4"	3	105	505
IC-410	10	4"	3	135	495
IC-610	10	6"	3	100	690

* 2–4" discharge connection included on pump



LOH



LOT

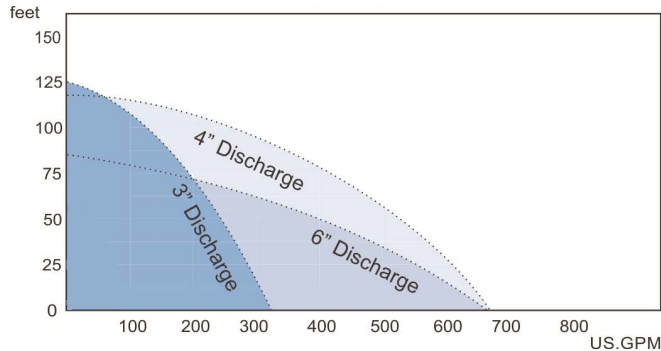


LKF2



LKF3

HDG Series Curves



HDG Series Features

- Triple seal design
- Cable entry with anti-wicking epoxy and compression grommet
- Thermal Auto-Cut 3Hp and below
- 30 ft cables on 5Hp and above
- Single and three-phase motors available
- Stainless steel outer jacket
- Cast iron motor housing
- Air-Filled motors
- B class motor option available on 2Hp and below
- H class motor option available on 5Hp and above
- Internal capacitors on select models
- Multiple discharge options
- High chrome alloy steel impeller & wear ring w/ 55-60 Rockwell Hardened
- Hardened agitator

	Discharge	3" • 4" • 6"
MAX	Liquid Temp. Applications Submersion	32–180° F Dewatering 100 ft
TYPE	Frequency Motor Insulation Protection Protector Bearing Mechanical Seal Impeller Lip Seal	60 Hz 2P • Air-Filled Motor Class B • Class H (≥5Hp) IP68 Auto-cut Ball Type Double Mechanical Seals Semi-Open • Enclosed Channel Silicon
MATERIAL	Upper Cover Motor Frame Main Shaft Mechanical Seal Impeller Casing Agitator Cable	ASTM-48, Class 30 ASTM-48, Class 30 SUS403 • SUS304 (≥5Hp) Upper: Carbon/Ceramic Lower: Silicon/Silicon HiCrFC HiCrFC FCD-700 VCT or H07RN-F or SJOW/SOW

MAX					
Model	HP	Dis.	Ø	Head	Flow
80HDG21.5	2	3"	1/3	52	215
80HDG22.2	3	3"	1/3	61	255
80HDG23.7	5	3"	3	93	255
80HDG25.5	7.5	3"	3	125	320
100HDG25.5	7.5	4"	3	90	495
100HDG27.5	10	4"	3	119	670
150HDG27.5	10	6"	3	85	670

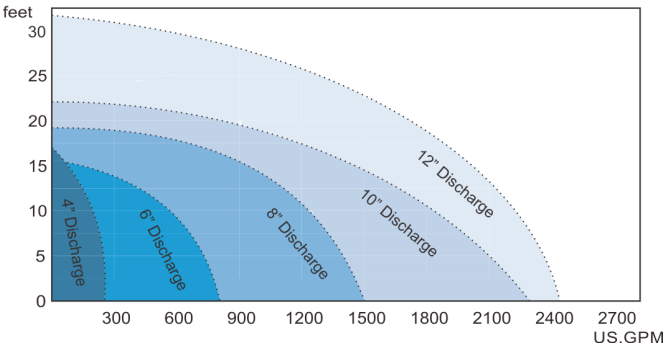


L Series

Submersible Large Volume Pumps

12

L Series Curves

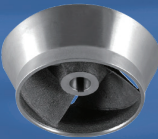


L Series Features

- Triple seal design
- Cable entry with anti-wicking epoxy and compression grommet
- Thermal Auto-Cut 3Hp and below
- 30 ft Cables on 5Hp and above
- Single and three-phase motors available
- Stainless steel outer jacket
- Cast iron motor housing
- Air-filled motors
- B class motor option available on 2Hp and below
- H class motor option available on 5Hp and above
- Internal capacitors on all single phase models
- Axial flow and mixed flow impeller designs

	Discharge	4" • 6" • 8" • 10" • 12"
MAX	Liquid Temp. Applications Submersion	32–180° F Irrigation/Dewatering 100 ft
TYPE	Frequency Motor Insulation Protection Protector Bearing Mechanical Seal Lip Seal Impeller	60 Hz 2P • Air-Filled Motor (0.5–1Hp) 4P • Air-Filled Motor (2–20Hp) Class B (≤3Hp) • Class H (≥7.5Hp) IP68 Auto-cut • Sacrificial Anode Ball Type Double Mechanical Seals Silicon Axial Flow (0.5–10Hp) • Mix-Flow (15–20Hp)
MATERIAL	Outer Cover Upper Cover Motor Frame Main Shaft Mechanical Seal Impeller Casing Cable	SUS304 ASTM-48, Class 30 (≤3Hp) • BC6 (≥7.5Hp) ASTM-48, Class 30 (≤3Hp) • SUS304 (≥7.5Hp) SUS403 Upper: Carbon/Ceramic Lower: Silicon/Silicon (≤3Hp) Carbon/Ceramic (≥7.5Hp) ALBC3 ASTM-48, Class 30 VCT or H07RN-F or SJOW/SOW

— MAX —					
Model	HP	Dis.	Ø	Head	Flow
L-405A	0.5	4"	1/3	12	217
L-41A	1	4"	1/3	17	260
L-62A	2	6"	3	14	550
L-63A	3	6"	3	16	800
L-200A	7.5	8"	3	19	1500
L-250A	10	10"	3	22	1720
L-250LA	15	10"	3	20	2320
L-300A	15	12"	3	27	2270
L-1220	20	12"	3	32	2475



Mix Flow Impeller

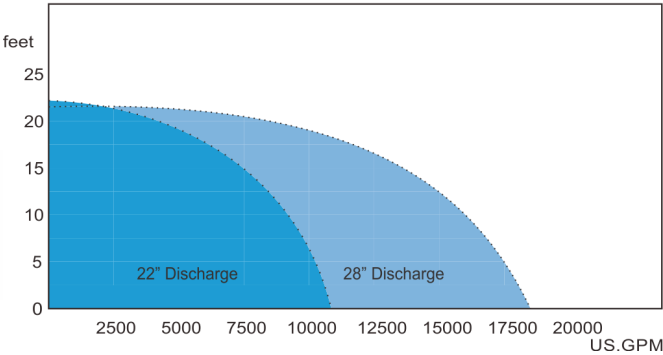


Sacrificial Anode



Axial Flow Impeller

LA Series Curves



	Discharge	22" • 28"
MAX	Liquid Temp.	32–180° F
	Applications	Irrigation/Dewatering
	Submersion	100 ft
TYPE	Frequency	60 Hz
	Motor	10P • Air-Filled Motor (50–60Hp) 12P • Air-Filled Motor (75–100Hp)
	Insulation	Class H
	Protection	IP68
	Protector	MTS & MS • Sacrificial Anode
	Bearing	Ball Type
	Mechanical Seal	Double Mechanical Seals
MATERIAL	Lip Seal	Silicon
	Impeller	Axial Flow
	Wear Ring	SAS13 (≤60Hp) • ALBC3 (≥75Hp)
	Upper Cover	ASTM-48, Class 30
	Motor Frame	ASTM-48, Class 30
	Main Shaft	SUS20J2
	Mechanical Seal	Upper: Silicon Carbide/Silicon Carbide Lower: Silicon Carbide/Silicon Carbide
	Impeller	SCS13
	Casing	ASTM-48, Class 30
	Cable	VCT or H07RN-F or SJOW/SOW

LA Series Features

- Triple seal design
- Cable entry with anti-wicking epoxy and compression grommet
- Standard 50 Ft power cables
- Cast Iron Motor Housing
- Air-filled motors
- H class motor option available
- Stand type or well type pump versions available
- Axial Flow Impeller

MAX					
Model	HP	Dis.	Ø	Head	Flow
LA-2250	50	22"	3	16	10,498
LA-2260	60	22"	3	21	9,050
LA-2875	75	28"	3	19	16,250
LA-28100	100	28"	3	22	18,400



Stand Type

Well Type



Sacrificial Anode



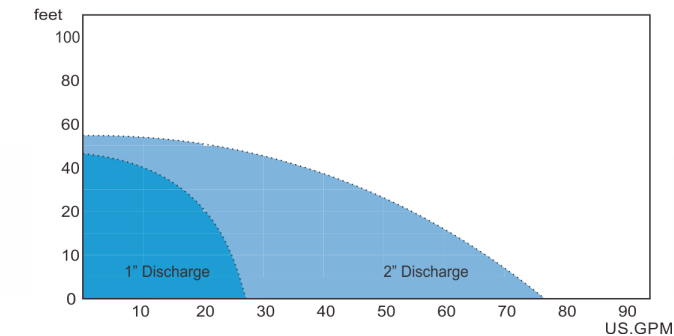
Axial Flow Impeller

GDR • GDS Series

Submersible Portable Dewatering Pumps

14

GDR • GDS Curves



Model	HP	Dis.	Ø	Head	Flow
GDR-400	0.5	1/2"	1	46	26
GDS-400	0.5	1/2"	1	40	60
GDS-750	1	1/2"	1	54	76

	Discharge	1" • 2"
MAX	Liquid Temp. Applications Submersion	32–104° F Dewatering 33 ft
TYPE	Frequency Motor Insulation Protection Protector Bearing Mechanical Seal Impeller	60 Hz 2P • Air-Filled Motor Class B IP68 Auto-Cut Ball Type Double Mechanical Seals Vortex
MATERIAL	Upper Cover Motor Frame Shaft End Stainer Mechanical Seal Casing Impeller Cable	Aluminum alloy Aluminum alloy SUS410 SUS304 Upper: Carbon/Ceramic Lower: Silicon/Silicon Synthetic rubber Urethane Rubber + SPCC VCT or H07RN-7 or SJOW/SOW

GDS Features

- Designed for the construction industry
- Lightweight, portable, and durable
- Motor frame & mechanical seal bracket are made of aluminum alloy
- Features all new design with exchangeable discharges (vertical & horizontal orientations)
- Equipped with an auto-cut motor protector
- Automatic version available with built-in float switch to turn pump on and off
- Standard discharge: 2" LOT2-74

GDR Features

- Air-filled motor with rubber suction pads for residential removal as low as 1 mm (0.39"). Starts up at levels of 5mm
- Designed to remove water from flat surfaces
- Equipped with an auto-cut motor protector and water-cooling motor
- Impeller & hydraulic components made of durable urethane rubber
- Standard discharge: 1" LOT1-74

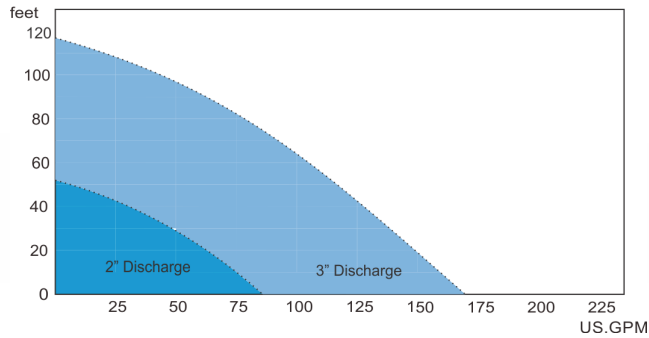


GDS Model

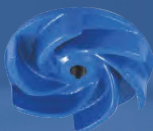


GDR Model

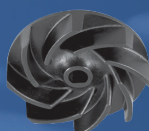
A Series Curves



Discharge 2" • 3"	
MAX	Liquid Temp. Applications Submersion
	32–104° F Dewatering 100 ft
TYPE	Frequency Motor
	60 Hz 2P • Air-Filled Motor (A-05A: Oil Motor)
	Insulation Protection
	Class B IP68
	Protector Auto-Cut Bearing Ball Type Mechanical Seal Double Mechanical Seals (A-05A: Single Seal)
MATERIAL	Lip Seal Silicon Impeller Semi-Open
	Upper Cover ASTM-48, Class 30 Motor Frame SUS304 Main Shaft SUS410 (0.5–1Hp) • SUS430 (2–3Hp) Mechanical Seal Upper: Carbon/Ceramic Lower: Silicon/Silicon
	Casing ASTM-48, Class 30 Impeller ASTM-48, Class 30 Cable VCT or H07RN-7 or SJOW/SOW



A Series Impeller



A Series Impeller

A Series Features

- Cable entry with anti-wicking epoxy and compression grommet
- Thermal Auto-Cut
- Single and three-phase motors available
- Stainless steel motor housing
- Anti air-locking device on select models
- Air-filled motors
- Internal capacitors standard on all single phase models

MAX						
Model	HP	Dis.	Ø	Head	Flow	Solids
A-05A	0.5	2"	1/3	40	58	0.25"
A-05B	0.5	2"	1/3	41	59	0.25"
A-05L	0.5	2"	1/3	36	77	0.25"
A-21	1	2"	1/3	52	88	0.25"
A-31	1	3"	1/3	38	143	0.25"
A-33H	3	3"	1	119	165	1"

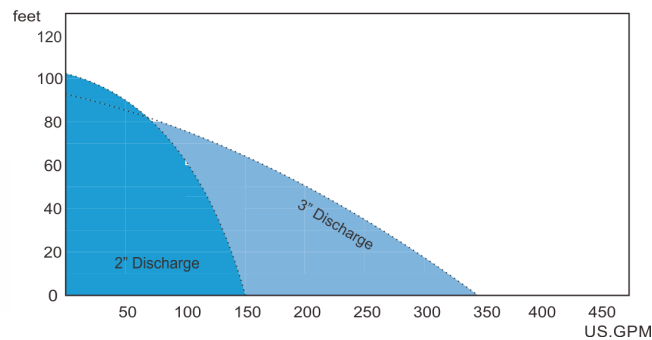


AN Series

Submersible Dewatering/Sump Pumps

16

AN Series Curves

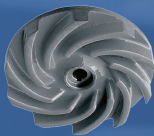


	Discharge	2" • 3"
MAX	Liquid Temp. Applications Submersion	32–180° F Dewatering/water features 100 ft
TYPE	Frequency Motor Insulation Protection Protector Bearing Mechanical Seal Lip Seal Impeller	60 Hz 2P • Air-Filled Motor Class B (≤2Hp) • Class H (≥5Hp) IP68 Auto-Cut Ball Type Double Mechanical Seals Silicon Semi-Open, Vortex
MATERIAL	Upper Cover Motor Frame Main Shaft Mechanical Seal Casing Impeller Cable	ASTM-48, Class 30 SUS304 • ASTM-48, Class 30 SUS410 (≤1.5Hp) • SUS430 (≤5Hp) Upper: Carbon/Ceramic Lower: Silicon/Silicon ASTM-48, Class 30 ASTM-48, Class 30 VCT or H07RN-7 or SJOW/SOW

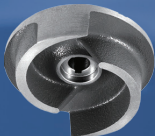
AN Series Features

- Triple seal design
- Cable entry with anti-wicking epoxy and compression grommet
- Thermal Auto-Cut
- Single and three-phase motors available
- Stainless steel motor housing
- Anti air-locking device on select models
- Air-filled motors
- Internal capacitors standard on all single phase models

MAX						
Model	HP	Dis.	Ø	Head	Flow	Solids
AN-21	1	2"	1/3	65	80	0.25"
AN-21.5	1.5	2"	1/3	72	89	0.25"
AN-22	2	2"	1/3	80	130	0.5"
AN-23	3	2"	1/3	102	146	0.5"
AN-32	2	3"	1/3	68	225	0.5"
AN-33	3	3"	1/3	88	261	0.5"
AN-35	5	3"	3	91	345	0.5"



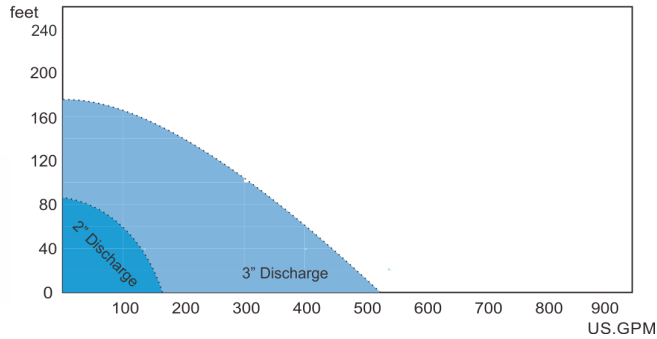
Vortex Impeller



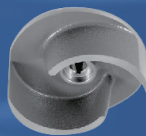
Semi-Open Impeller



AL Series Curves



Discharge		2" • 3"
MAX	Liquid Temp.	32–180° F
	Applications	Dewatering
TYPE	Submersion	100 ft
	Frequency	60 Hz
MATERIAL	Motor	2P (3600 RPM) • Air-Filled Motor
	Insulation	Class B (≤ 2 Hp) • Class H (≥ 5 Hp)
	Protection	IP68
	Protector	Auto-Cut (5–15Hp: MTS & MS)
	Bearing	Ball Type
	Mechanical Seal	Double Mechanical Seals
	Lip Seal	Silicon
	Impeller	Semi-Open
	Upper Cover	ASTM-48, Class 30
	Motor Frame	ASTM-48, Class 30
	Main Shaft	SUS403 • SUS420J2 (≥ 7.5 Hp)
	Mechanical Seal	Upper: Carbon/Ceramic Lower: Silicon/Silicon
	Casing	ASTM-48, Class 30
	Impeller	ASTM-48, Class 30
	Footing	ASTM-48, Class 30
	Cable	VCT or H07RN-7 or SJOW/SOW



Semi-Open Impeller

AL Series Features

- Triple seal design
- Cable entry with anti-wicking epoxy and compression grommet
- Thermal Auto-Cut
- Single and three-phase motors available
- Cast iron motor housing
- Anti air-locking device on select models
- Air-filled motors
- B Class motor option available on 2Hp and below
- H Class motor option available on 5Hp and above
- Moisture and thermal overload standard for 5HP and above
- Internal capacitors standard on all single phase models 3Hp and below

Model	HP	Dis.	Ø	Head	Flow	Solids
50AL21.5	2	2"	1/3	66	155	0.75"
50AL22.2	3	2"	1/3	86	176	0.75"
80AL21.5	2	3"	1/3	51	260	0.75"
80AL22.2	3	3"	1/3	67	295	0.75"
*80AL23.7A	5	3"	1/3	99	353	0.75"
80AL25.5	7.5	3"	3	117	405	0.75"
80AL27.5	10	3"	3	144	450	0.75"
80AL211	15	3"	3	175	520	0.75"

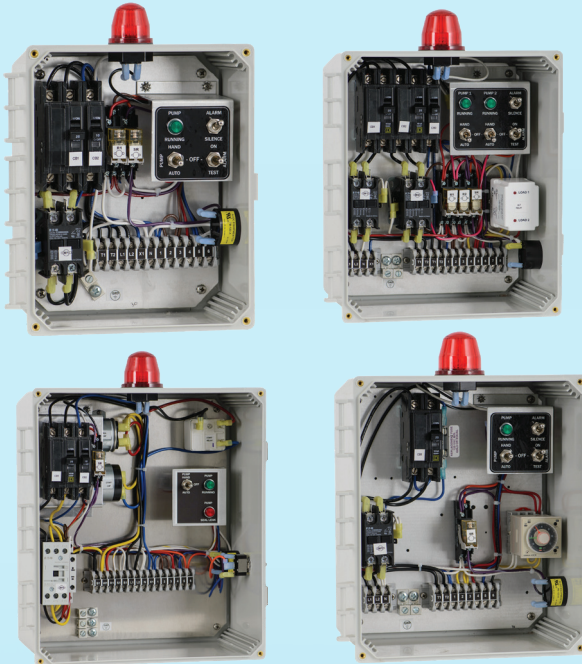
*External Capacitors



Control Panels & Basins

18

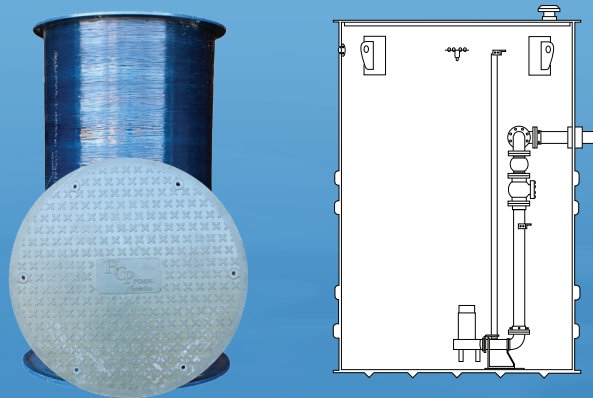
MISCELLANEOUS



DESCRIPTIONS

Control Panel Options

- Plug-In Pedestal/Post A
- Indoor/Outdoor High Water Alarms w/ Battery Backup
- Plug-in/Standard Junction Boxes
- Custom Junction/Connection Boxes
- Mechanical Control Duty Switches
- Standard & Heavy Duty Switches
- Narrow & Wide-Angle Float Switches
- Pump Up & Pump Down Float Switches
- Aerobic Control Panels
- Time Dosing Control Panels
- Grinder Control Panels
- Simplex & Duplex Panels w/ NEMA 4X Enclosures
- Complete 316 Stainless Steel NEMA 4X Enclosures
- Grasslin & Omron Timers
- UL & CSA Listed Products
- Full Line of Accessories & Parts



a sectional of our basins

Basin Features

- Manufactured to ASTM D3753 specifications
- Designed to withstand hydrostatic loading of 62.4 lbs/ft³
- Produced to withstand saturated soil loadings of 120 lbs/ft³
- Available in various widths from 18–120 inches and lengths from 24–300 inches
- Accessories include basin extensions, solid fiberglass lids, aluminum hatch covers, traffic-rated lids, detached valve vaults, and many more options
- Customized basin packages built to suit your needs

PROTECTION & ACCESSORIES

DESCRIPTIONS



Submersible Pump Guide Rail Systems

Automatic coupling system designed for submersible pump applications. The HCP GRS provides an easier and safer way to perform routine maintenance and repairs on equipment without the need for personnel to enter the wet well area. The HCP GRS adapter is mounted to the pump discharge, then lowered down by stainless steel chains and fasteners to align to the base elbow. Available in 2–16."



Guide Rail Adapters

Adapter (ADT) Flange conforms to JIS 10K/ANSI 125/DIN 2633. Cast iron construction and available in 2–6" flange construction.

Flygt Guide Rail Adapters Cast iron; available in 3, 4, 6, and 8" flange construction.



Auto-Cut Protector (MTS)

The auto-cut protector is an automatic cut-off switch installed inside the motor. The switch automatically cuts off power to the motor in the event of overheating or a power surge. The switch automatically restarts the motor once the temperature drops to about 60–70°F



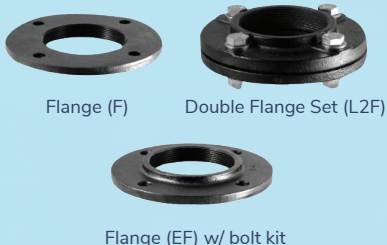
Overheat Protector

The overheat protector is an automatic cut-off switch built into the single-phase motor to monitor the temperature of the inner motor. The switch automatically cuts off power if the temperature exceeds the maximum allowable operating temperature (insulator class max. temperature). The switch automatically restarts the motor once the temperature drops to about 60–70°F



Moisture Sensor (MS)

The moisture sensor is used to detect moisture leakage through the mechanical seals. This occurs when the seal has been worn down or damaged; if moisture is found, the sensor will then trigger and transmit a signal to control panel. The control panel will then set off a warning signal and/or power off to protect the pump motor. If this occurs, schedule pump maintenance to replace the mechanical seal.



Flange (F)

Double Flange Set (L2F)

Flange (EF) w/ bolt kit

Flange & Flange Sets

Cast iron construction. Flange fittings for 1.25–8" discharge. Threads available: PT, PF, and NPT.

ADT Adapters



2" x 2"
JIS to ANSI ADT



2" x 3"
JIS to ANSI ADT



3" x 3"
JIS to ANSI ADT



3" x 4"
JIS to ANSI ADT
Spool Type



3" x 4"
JIS to ANSI ADT
Flat Type



4" x 4"
JIS to ANSI ADT



2" x 3"
JIS TO ANSI
2" Grinders



3" or 4"
Guide Rail Spacer

Flygt Guide Rail Adapters



TA-80F
3" Flygt ADT



TA-100F
4" Flygt ADT



4" ANSI
Flygt ADT



TA-150F



6" ANSI
Flygt ADT

Retro-Fitting Adapters



Liberty Single Rail



Myers, Conery & Keen
with Check Valve
1.25" and 2"



Myers, Conery & Keen
without Check Valve
1.25" and 2"



Myers, Conery & Keen
without Check Valve
1.25" and 2"
EB2-96 Elbow



Barney's Pump



2" Homa / ABS
Grinder



1.25" Myers
Retro-fit

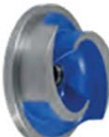
Impeller Types



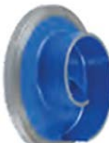
E Style Impeller



U Style Impeller



P Style Impeller



P Style Impeller



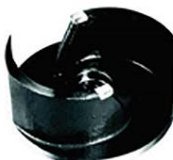
Axial Flow Impeller



Axial Flow Impeller



Mix Flow Impeller



Cutter Impeller



Cutter Wear Plate



Agent

HCP Pumps America, Inc.

1723 Industrial Pkwy
Foley, AL 36535
251-943-8080

Website

hcpumpsofamerica.com